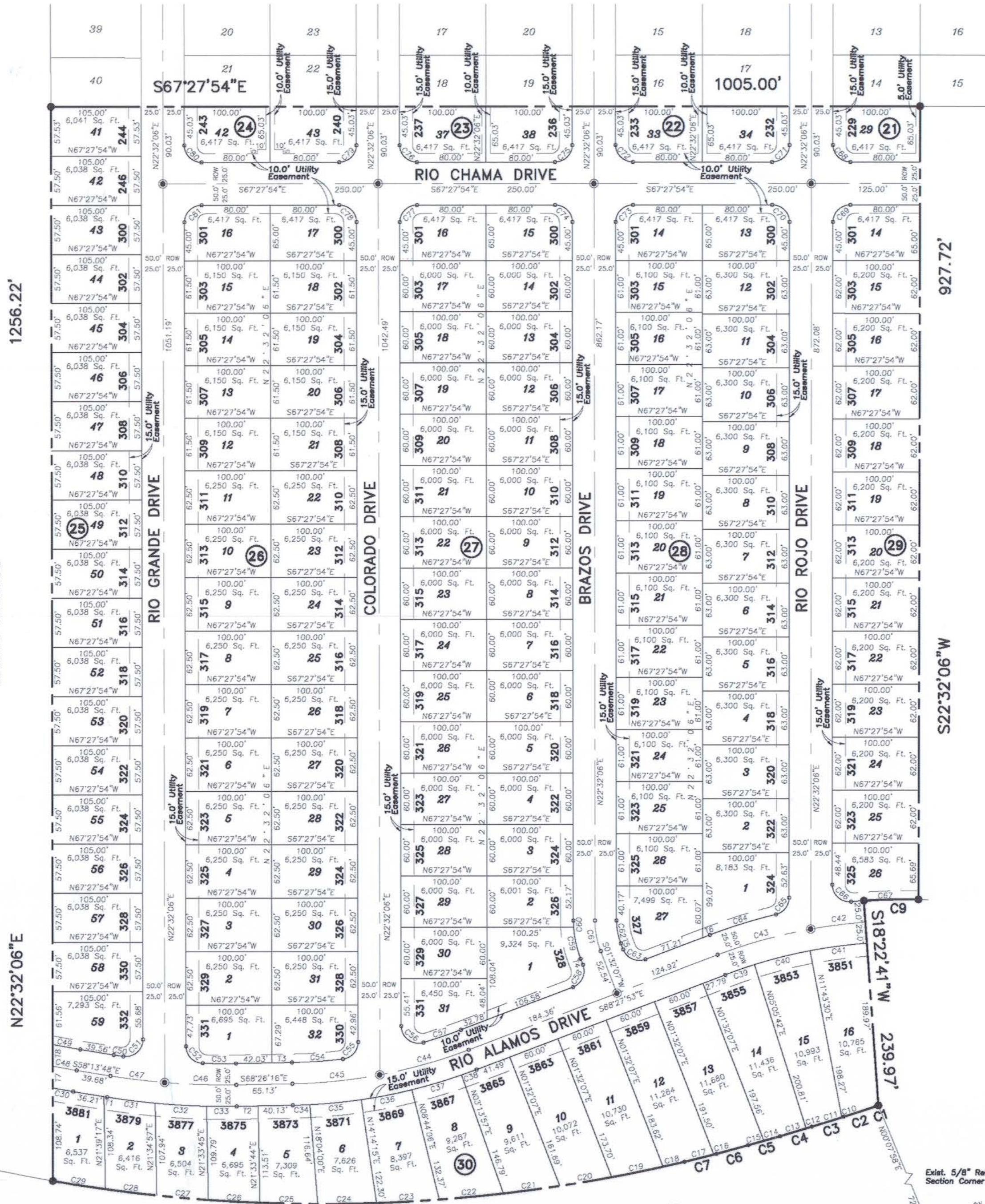


RIO VISTA SUBDIVISION UNIT 3
 SITUATE WITHIN SECTION 2, TOWNSHIP 29 SOUTH,
 RANGE 3 EAST, N.M.P.M.,
 DONA ANA COUNTY, NEW MEXICO
 28.552 Acres

RIO VISTA SUBDIVISION
 Book 18, Pages 213-219,
 Filed as Plot No. 2637 on March 8, 1995



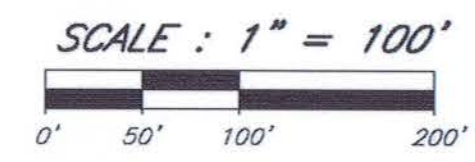
LINE	DIRECTION	DISTANCE
T1	S58°13'48"E	3.59'
T2	S68°26'16"E	25.01'
T3	S68°26'16"E	23.10'
T4	S01°32'07"W	7.54'
T5	N01°32'07"E	7.54'
T6	N88°27'53"W	8.71'
T7	N22°32'06"E	25.44'
T8	N22°32'06"E	25.45'

CURVE	RADIUS	LENGTH	CHORD	BEARING	DELTA
C1	5371.92'	3.62'	3.62'	N85°53'44"W	00°02'19"
C2	4155.94'	39.06'	39.06'	N85°36'25"W	00°32'19"
C3	3382.13'	38.85'	38.85'	N85°00'31"W	00°39'29"
C4	2846.42'	38.64'	38.64'	N84°17'26"W	00°46'40"
C5	2453.56'	38.43'	38.43'	N83°27'10"W	00°53'51"
C6	2153.14'	38.22'	38.22'	N82°29'44"W	01°01'02"
C7	1881.21'	37.98'	37.98'	N81°25'08"W	01°09'24"
C8	1815.18'	739.16'	734.07'	N69°10'29"W	23°19'54"
C9	625.00'	63.39'	63.36'	N68°43'50"W	05°48'40"
C10	3382.13'	2.14'	2.14'	N85°19'10"W	00°02'11"
C11	3382.13'	36.71'	36.71'	N84°59'26"W	00°37'19"
C12	2846.42'	6.79'	6.79'	N84°36'40"W	00°08'12"
C13	2846.42'	31.85'	31.85'	N84°13'20"W	00°38'28"
C14	2453.56'	19.32'	19.32'	N83°40'34"W	00°27'04"
C15	2453.56'	19.11'	19.11'	N83°13'38"W	00°26'47"
C16	1881.21'	2.97'	2.97'	N81°57'07"W	00°05'26"
C17	1881.21'	35.01'	35.01'	N81°22'25"W	01°03'58"
C18	1815.18'	25.51'	25.51'	N80°26'16"W	00°48'19"
C19	1815.18'	60.82'	60.81'	N79°04'32"W	01°55'11"
C20	1815.18'	61.19'	61.19'	N77°08'59"W	01°55'53"
C21	1815.18'	66.13'	66.13'	N75°08'25"W	02°05'12"
C22	1815.18'	74.80'	74.80'	N72°54'58"W	02°21'40"
C23	1815.18'	72.93'	72.92'	N70°35'04"W	02°18'07"
C24	1815.18'	68.29'	68.29'	N68°21'21"W	02°09'20"
C25	1815.18'	67.16'	67.16'	N66°13'04"W	02°07'12"
C26	1815.18'	60.16'	60.16'	N64°12'30"W	01°53'57"
C27	1815.18'	60.21'	60.21'	N62°18'31"W	01°54'02"

SOUTHERN PACIFIC RAILROAD
 (200' R.O.W.)

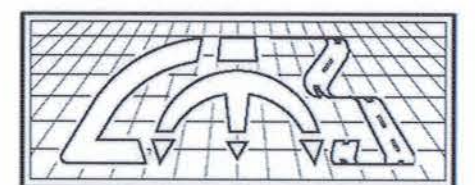
CURVE	RADIUS	LENGTH	CHORD	BEARING	DELTA
C28	1815.18'	60.08'	60.08'	N60°24'36"W	01°53'47"
C29	1815.18'	61.87'	61.87'	N58°29'08"W	01°57'11"
C30	1708.23'	24.08'	24.08'	S57°16'55"E	00°48'28"
C31	850.00'	56.42'	56.41'	S60°07'54"E	03°48'12"
C32	850.00'	60.01'	60.00'	S64°03'22"E	04°02'43"
C33	850.00'	35.00'	35.00'	S67°15'30"E	02°21'33"
C34	625.00'	19.88'	19.88'	S69°20'56"E	01°49'20"
C35	625.00'	60.02'	60.00'	S73°00'41"E	05°30'09"
C36	625.00'	60.02'	60.00'	S78°30'50"E	05°30'09"
C37	625.00'	60.02'	60.00'	S84°00'59"E	05°30'09"
C38	625.00'	18.51'	18.51'	S87°36'58"E	01°41'49"
C39	575.00'	35.72'	35.72'	S86°41'06"E	03°33'34"
C40	575.00'	66.54'	66.50'	S81°35'24"E	06°37'48"
C41	575.00'	66.61'	66.58'	S74°57'22"E	06°38'16"
C42	600.00'	64.00'	63.97'	N74°41'34"W	06°06'43"
C43	600.00'	112.22'	112.05'	N83°06'24"W	10°42'58"
C44	600.00'	107.59'	107.45'	N83°19'39"W	10°16'27"
C45	600.00'	102.13'	102.01'	N73°18'51"W	09°45'09"
C46	825.00'	83.49'	83.45'	N65°32'20"W	05°47'53"
C47	825.00'	63.49'	63.48'	N60°26'06"W	04°24'35"
C48	1683.23'	28.29'	28.29'	N57°12'02"W	00°57'46"
C49	1683.23'	32.49'	32.49'	S57°06'59"E	01°07'22"
C50	800.00'	11.19'	11.19'	S58°37'51"E	00°48'05"
C51	20.00'	34.36'	30.29'	N71°45'07"E	98°26'01"
C52	20.00'	30.79'	27.84'	S21°34'08"E	88°12'28"
C53	800.00'	38.61'	38.61'	S67°03'19"E	02°45'55"
C54	575.00'	59.47'	59.44'	S71°24'03"E	05°55'32"

CURVE	RADIUS	LENGTH	CHORD	BEARING	DELTA
C55	20.00'	29.01'	26.53'	N64°05'09"E	83°06'05"
C56	20.00'	37.14'	32.03'	S30°39'47"E	106°23'45"
C57	575.00'	46.20'	46.19'	S86°09'46"E	04°36'13"
C58	20.00'	31.42'	28.28'	N46°32'07"E	90°00'00"
C59	125.00'	37.98'	37.83'	N10°14'22"E	17°24'30"
C60	125.00'	7.83'	7.83'	N20°44'22"E	03°35'29"
C61	100.00'	36.65'	36.45'	S12°02'07"W	20°59'59"
C62	75.00'	27.49'	27.33'	S12°02'07"W	20°59'59"
C63	20.00'	31.42'	28.28'	S43°27'53"E	90°00'00"
C64	625.00'	80.27'	80.22'	S84°47'07"E	07°21'32"
C65	20.00'	26.65'	24.73'	N60°42'53"E	76°21'33"
C66	20.00'	33.34'	29.61'	S25°13'41"E	95°31'34"
C67	625.00'	78.17'	78.12'	S69°24'29"E	07°09'56"
C68	20.00'	31.42'	28.28'	S22°27'54"E	90°00'00"
C69	20.00'	31.42'	28.28'	S67°32'06"W	90°00'00"
C70	20.00'	31.42'	28.28'	N22°27'54"W	90°00'00"
C71	20.00'	31.42'	28.28'	N67°32'06"E	90°00'00"
C72	20.00'	31.42'	28.28'	S22°27'54"E	90°00'00"
C73	20.00'	31.42'	28.28'	S67°32'06"W	90°00'00"
C74	20.00'	31.42'	28.28'	N22°27'54"W	90°00'00"
C75	20.00'	31.42'	28.28'	N67°32'06"E	90°00'00"
C76	20.00'	31.42'	28.28'	S22°27'54"E	90°00'00"
C77	20.00'	31.42'	28.28'	S67°32'06"W	90°00'00"
C78	20.00'	31.42'	28.28'	N22°27'54"W	90°00'00"
C79	20.00'	31.42'	28.28'	N67°32'06"E	90°00'00"
C80	20.00'	31.42'	28.28'	S22°27'54"E	90°00'00"
C81	20.00'	31.42'	28.28'	S67°32'06"W	90°00'00"



LEGEND

- Set 5/8" Rebar w/ Cap stamped Land-Mark TX4869 NM11402
- Proposed City Monument



Land-Mark Professional
 Surveying, Inc.
 1420 Bessemer Drive, Suite 'A'
 El Paso, Texas 79936
 (915) 598-1300
 email: Larry@Land-marksurvey.com
 "Serving Texas, New Mexico
 and Arizona"
 Job No. 11-10-28077

447