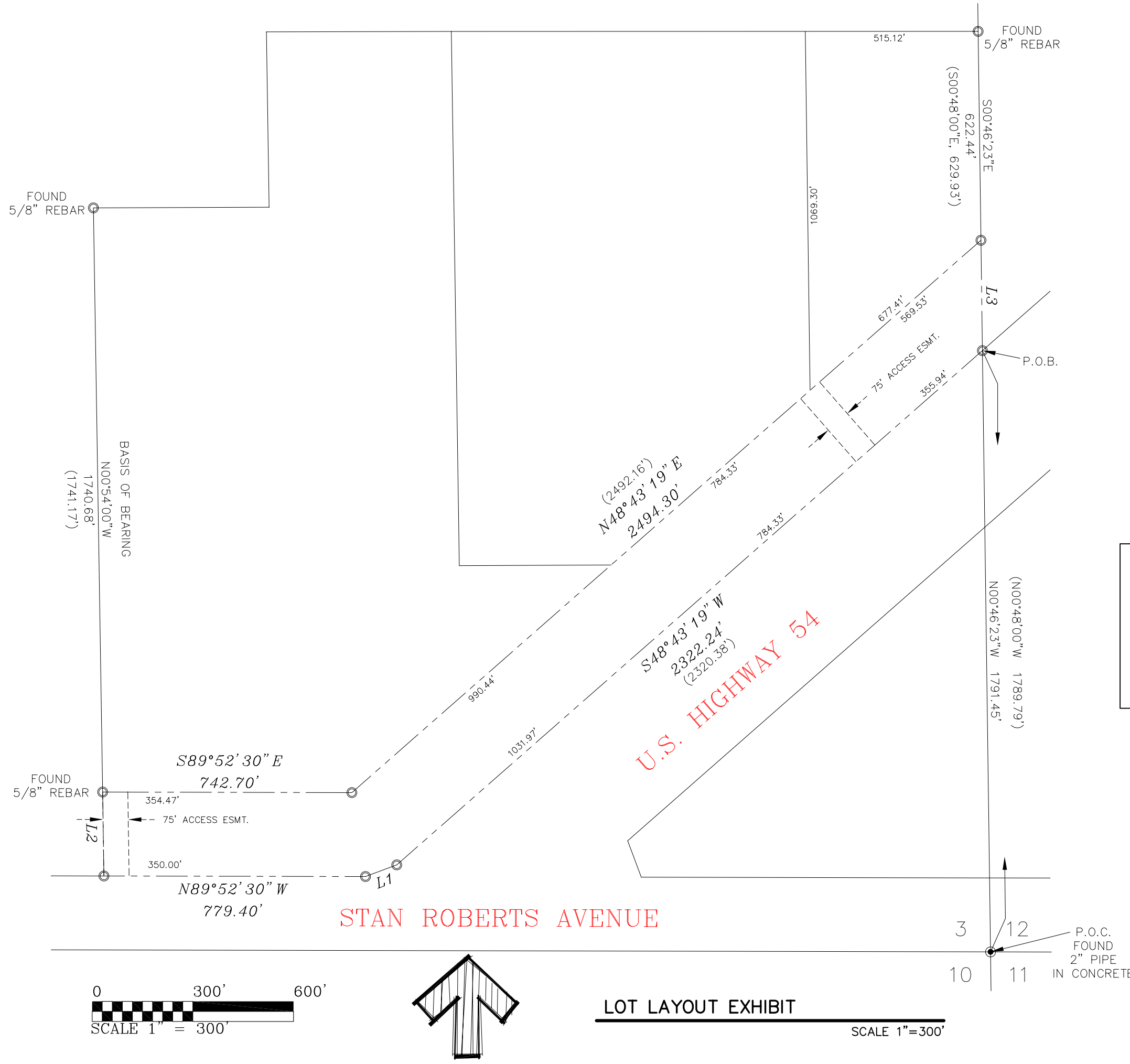


C:\Draw\Proposals\STAN ROBERTS BORSBERRY_exhibit.dwg, 7/14/2006 4:37:08 PM




LINE TABLE		
LINE	LENGTH	BEARING
L1	99.40'	S69°31'06" W
L2	250.04'	N00°54'00" W
L3	328.85'	S00°46'23" E
(L3)	328.66'	S00°48'00" W

⊙ SET 5/8" REBAR WITH CAP UNLESS NOTED OTHERWISE

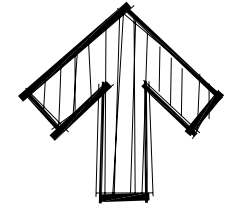
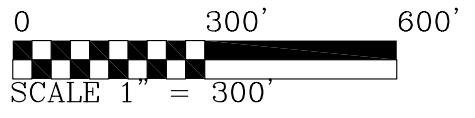
AREA
804.775 SQUARE FEET
18.4751 ACRES

PREPARED BY:



444 EXECUTIVE CENTER BLVD. SUITE 134 - EL PASO, TX - 79902
PHONE (915) 351-8033 - FAX (915) 351-8055

A PORTION OF THE SOUTHEAST 1/4 OF SECTION 3, BLOCK 80, TOWNSHIP 1 TEXAS AND PACIFIC RAILWAY CO. SURVEYS EL PASO COUNTY, TEXAS



LOT LAYOUT EXHIBIT
SCALE 1"=300'

3 12
10 11
P.O.C. FOUND 2" PIPE IN CONCRETE