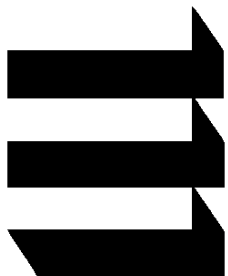


For Lease
7206 McKnight Rd
Unit 100
Pittsburgh, PA 15237



- 2,380 Sq.Ft. +/- Retail or Office space**
- Near Ross Park Mall Entrance-Excellent Visibility**
- Pricing Available Upon Request**
- Available 5/1/22 or Sooner**



Equity
Real
Estate

David G. Tkacik
412-422-1600 ext 245
dtkacik@equityrealestate.net

2029 Murray Avenue – Pittsburgh, PA 15217

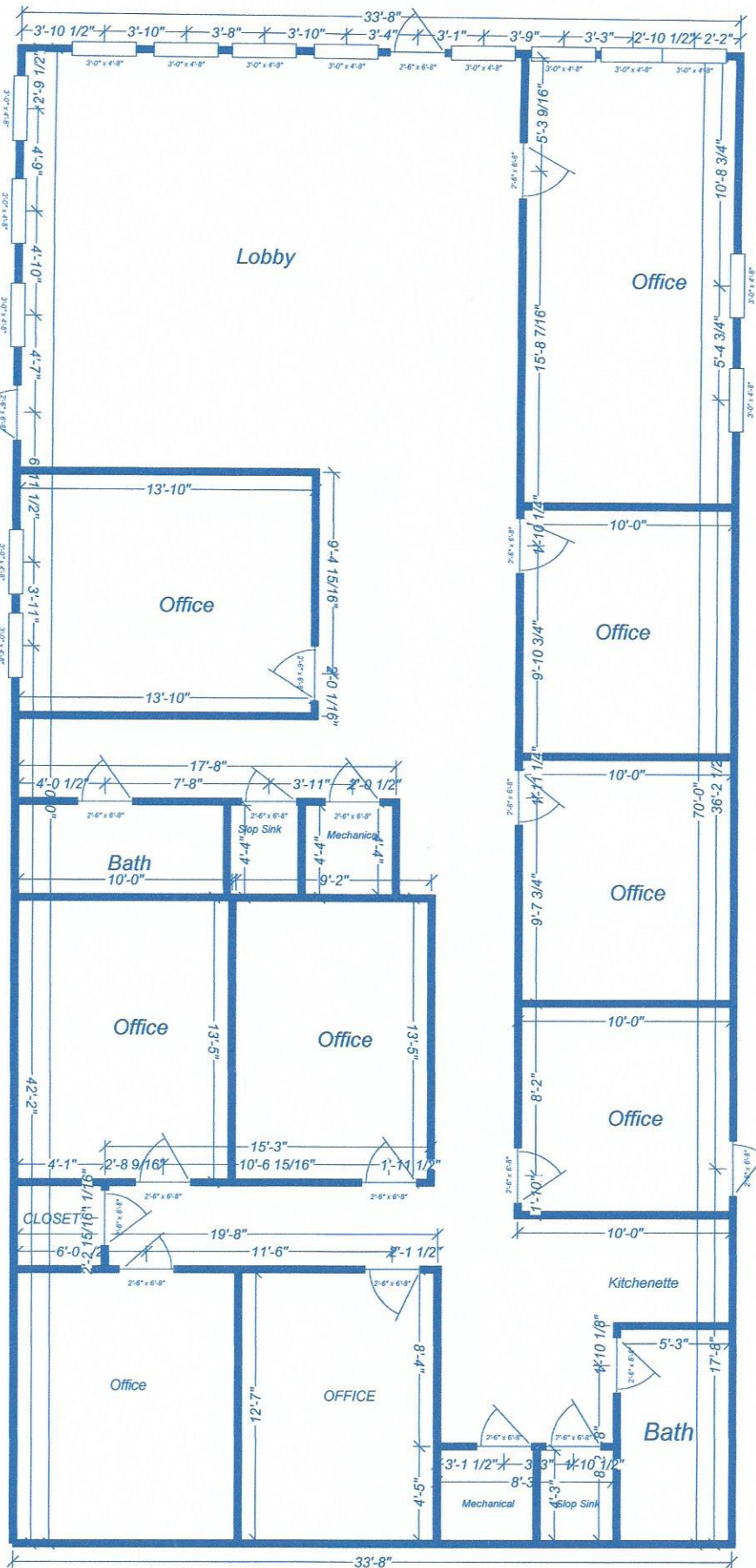
All information furnished regarding property for sale, rental or financing is from sources deemed reliable. No representation is made as to the accuracy thereof and it is submitted subject to errors, omissions, change of price, rental or other conditions, prior sale, lease or financing, or withdrawal notice.

COMMERCIAL DIVISION – 412.422.1600 / 412.422.9236 fax
MANAGEMENT DIVISION - 412.422.9200

Additional Entrance

Parking Lot

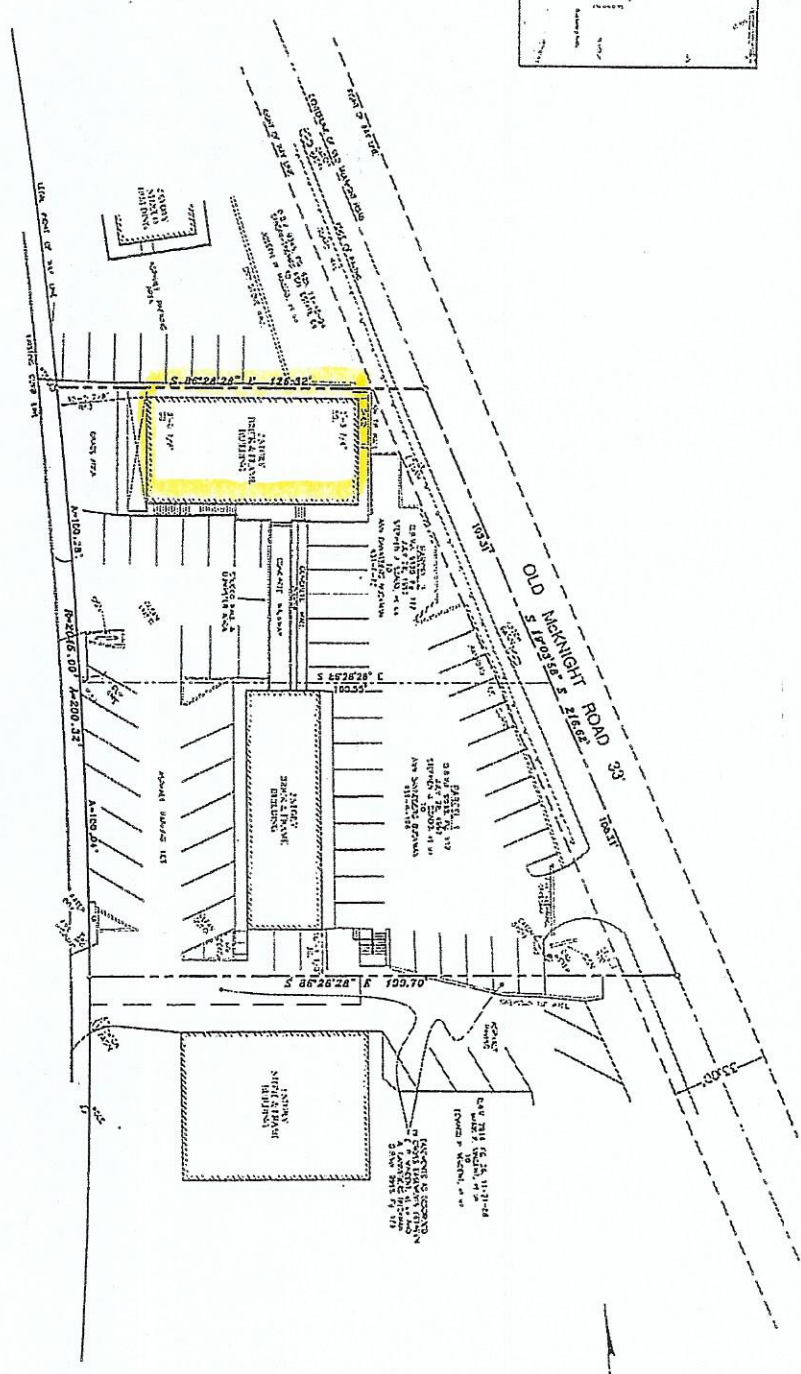
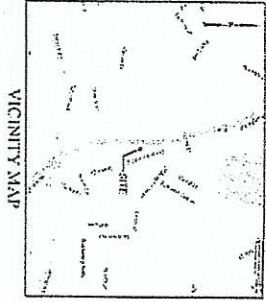
Main Entrance



7206 McKnight Rd
Pittsburgh, PA 15237

Approx. 2,380 sq.ft

Sketch NOT made by and Architect
and NOT to Scale



Indicated shall not be taken as a representation of the accuracy of the information shown on this plan. The engineer shall not be responsible for the accuracy of the information shown on this plan. The engineer shall not be responsible for the accuracy of the information shown on this plan. The engineer shall not be responsible for the accuracy of the information shown on this plan.



PLAN OF PROPERTY
 ROSS TOWNSHIP,
 ALLEGHENY COUNTY, PA.
 MCKNIGHT PROPERTIES

Prepared by:
 TAIT ENGINEERING
 122 W. 10th St.
 Erie, PA 16501

Project No. 12298

