



Tapestry Weaving in Santa Fe

November 1 - 8, 2023

Plus an optional 4 Day Extension to Taos, Tierra Wools & Georgia O'Keeffe Country



A Hands-On Tapestry Weaving Workshop and Cultural Immersion

"Chasing Beauty"

An Optional Four Day
Pre-Trip Extension.
See detailed itinerary
beginning on Page 9

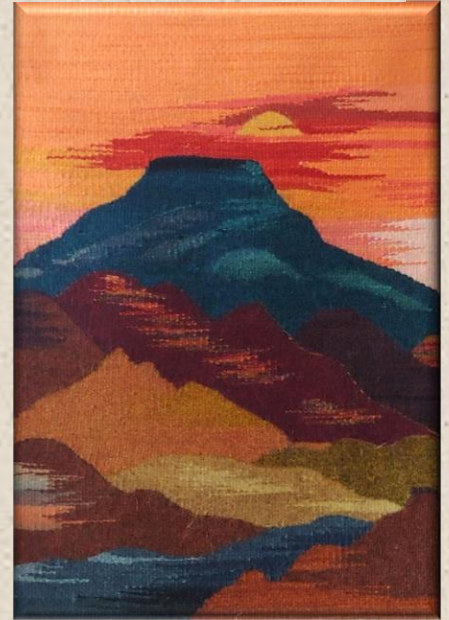


"Uncommon Textile Journeys that Change Lives"

Meet Our Instructors...

Cari Sample Malver

is an award-winning weaver trained in the Rio Grande tradition of weaving unique to the Southwest. This style of the art was brought to Northern New Mexico and Southern Colorado by the Spanish settlers in the 16th century and is a result of the interweaving of the Spanish, Mexican native and local Indian pueblo weaving cultures. Cari is passionate about weaving and exposing others to the many forms of fiber art around the world. Cari founded Loom Dancer Odysseys and has been a specialty textile tour company owner since 1992. She weaves on a variety of different looms and in many countries. In addition to leading Loom Dancer's fiber arts expeditions, she loves to teach weaving classes at her studio in Santa Fe. When not exploring the world, Cari splits her time between Telluride, Colorado and Santa Fe, New Mexico where the natural landscapes and cultures are her muse.



"Doggone Good Weaving"
Handwoven Tapestry by Ginger Snip



Ginger Snip

Born in Germany and raised in Texas, Ginger learned to sew and knit as a child. She graduated from the University of Maryland in Textile Marketing and spent years studying weaving and dyeing at the Southwest School of Art and Design in San Antonio, Texas. In addition to being an award-winning weaver, Ginger is an Assistant Guide for Loom Dancer Odysseys. She is a grandmother of 2, a mother of 3 and lives in Telluride, Colorado with her husband, dog and 4 horses. She weaves on Rio Grande, Mirrix, and SAORI looms at home and loves to travel and interact with fiber enthusiasts everywhere.



Featuring
4 Days
of
Hands-On
Weaving
and a
Full Day
Guided Tour
of the Area

The Itinerary at a Glance

Day 1: Arrive Santa Fe; Evening Welcome Reception

Day 2: Full day guided tour of Chimayo Weavers, wine tasting, iconic Northern New Mexico sites, local artists, etc.

Days 3-4: Tapestry Weaving Workshop

Day 5: Free day to explore Santa Fe including museums and other sites with included Culture Pass

Days 6-7: Tapestry Weaving Workshop continues

Day 8: Travel Home

Tapestry Weaving in Santa Fe

A Unique Fiber Getaway in the Legendary Artist Mecca of the Southwest



Wednesday, November 1

Arrive Santa Fe

Today you travel from your home to Santa Fe, New Mexico. We will be happy to make recommendations for your travel arrangements. Travel options include flights directly into Santa Fe or Albuquerque. Upon arrival, you will transfer on your own to the charming Inn of the Governors. Nestled in the heart of Santa Fe, our hotel has over a 50-year tradition of intimacy and charm. Inn of the Governors is located in the heart of downtown Santa Fe, just a couple of blocks away from the historic Santa Fe Plaza and not far from the art-filled galleries of Canyon Road and offers quintessential Santa Fe hospitality. This evening, we will gather for a welcome reception and reception. **Please be sure that your flight arrives in time for this event at 5:30PM.** Dinner is on your own so that you can experience one of Santa Fe's marvelous restaurants. Overnight at Inn of the Governors. (Welcome reception)

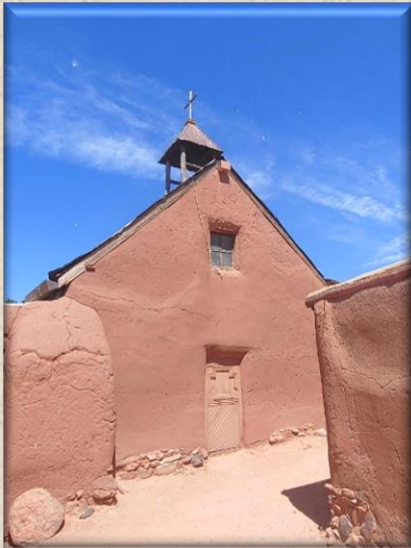




Thursday, November 2

Full Day Tour of Northern New Mexico Highlights

Today we have the entire day to explore some of Northern New Mexico's iconic sites. One of the highlights of this area is historic El Rancho Las Golondrinas, a living history museum. Located on 200 acres in a rural farming valley just south of Santa Fe, the museum is dedicated to the history, heritage and culture of 18th and 19th century New Mexico. Original colonial buildings on the site date from the early 1700s. In addition, historic buildings from other parts of northern New Mexico have been reconstructed at Las Golondrinas. Villagers clothed in the styles of the times show how life was lived on the frontier in early New Mexico. Even though the site is closed to the public for the season, we have a special private visit geared toward the weaving history of this amazing region.



The rest of the itinerary for this special day will depend on the weaver's interest. We can return to Chimayo to see the famous weavers. The town of Chimayo was founded near the end of the 17th century by Spanish settlers who became proficient at farming, raising stock and wool weaving. Their descendants are still experts in many of these traditions. about the entire Rio Grande weaving process which is closely linked to the history of New Mexico and is indigenous to this area. Or we can travel north to beautiful Abiquiu, home of Georgia O'Keeffe. We have many choices today. Overnight at Inn of the Governors. (B)





Friday - Saturday, November 3 - 4 Tapestry Weaving Workshop

We will begin the first two days of our workshop learning various weaving techniques including curves, geometric designs and landscapes creating various shapes and color blending. Learning these techniques enables the weaver to create many styles of tapestry including pictorials, abstract or traditional design. You will come away with a completed tapestry, not just a sampler. This very personalized class is suitable for all levels of weaving experience, even beginners. Overnight at Inn of the Governors. (B daily)



Sunday, November 5 Free Day to Explore Santa Fe



Today is entirely at your leisure to discover the many wonders of Santa Fe at your own pace. Armed with your complimentary Cultural Pass for free entrances, you may wish to visit some of the many museums including the International Folk Art Museum, The Indian Museum, the Georgia O'Keefe Museum, and others.

The shopping in Santa Fe is legendary and the many galleries feature world class art. Don't miss the Native American artists that show their creations in front of the Governor's Palace. They travel from miles around and are allotted space each day based on a lottery system. Today's options are seemingly endless! We recommend having lunch at one of the iconic restaurants to break up the day. The offerings range from traditional local's favorites to five-star dining experiences.



Overnight at Inn of the Governors. (B)

Monday – Tuesday, November 6 - 7

Tapestry Weaving Workshop

We continue our weaving workshop for these two days completing our amazing creations. It is always such a pleasure to see where the various forms of inspiration take each weaver! Where will yours lead you? At the end of the workshop, we may all choose to have a farewell dinner together and celebrate our week of adventure in the Southwest (not included). Overnight at Inn of the Governors. (B daily)



Wednesday, November 8

Farewell to Santa Fe

This morning after breakfast, you will begin your journey home filled with memories of your weaving adventure in the Southwest. (B)

Land Costs Include:

- 7 Nights' Accommodation based on double occupancy; single accommodations available with supplement
- Breakfasts daily
- Coffee, tea, and snacks during workshop
- 4 Days of Tapestry Weaving Workshop including use of the pre-warped loom and all materials and equipment
- 1 Day private sightseeing tour and exclusive cultural visits
- All applicable service charges and taxes
- Pre-departure materials including a customized Travel Guide containing destination information, packing list, and reading list

Land Costs Exclude:

- Air transportation
- Airport transfers as indicated
- Any item not specifically included in your program including all snacks, extra personal beverages & bottled water, etc. other than during designated meals, alcoholic beverages
- Tips for your guide, ground staff, drivers, hotel porters and other service staff
- Additional Insurance of any kind; any and all expenses resulting from delays arising beyond our direct control due to bad weather, trail, river, sea, and/or road conditions, sickness, civil unrest, government action; or any other transportation delays for any reason beyond our direct control; optional activities, free-day activities, including any additional stopover arrangements not specifically included in the itinerary.

Cost:

\$1,895 USD Per Person Based on Double Occupancy
Single Supplement \$650 for those prefer their own room

Please call us with any questions or to reserve your spot

800.369.3033 (from the US only) ~ 970.728.6743



does not believe in large group, bargain or "ordinary" tours. Instead, we strive to immerse the discerning and adventurous traveler into the wondrous world of global fiber arts with quality cultural encounters. Our typical workshop size is limited to 9 participants to allow for a more hands-on, relaxed, and intimate travel experience.

We invite you to join us;
be a traveler, not a tourist.



PO Box 22128, Telluride, CO 81435

loomdancerSF@gmail.com ~ loomdance@aol.com ~ www.loomdancer.com

800-369-3033 (from the US only) ~ 970-728-6743 ~ Fax 970-728-7081

Chasing Beauty in Northern New Mexico

An Optional Pre-Trip Extension into Taos, Chama, and Georgia O'Keeffe Country



Saturday, October 28

Today you travel from your home to Santa Fe, New Mexico. We will be happy to make recommendations for your travel arrangements. Travel options include flights directly into Santa Fe or Albuquerque. Upon arrival, you will transfer on your own to the charming **Inn on the Alameda** located in the heart of downtown Santa Fe, just a couple of blocks away from the historic Santa Fe Plaza and a stone's throw from the art-filled galleries of Canyon Road. Here you will find quintessential Santa Fe hospitality. This evening, we may gather for a welcome drink in their tequila bar. Dinner is on your own so that you can experience one of Santa Fe's marvelous restaurants. Overnight at Inn on the Alameda. (No meals included)



Sunday, October 29

Exploring the High Road to Taos

Today we set out in our private van with professional guide Monique Shoustra, to drive the High Road to Taos Scenic Byway. Along the way, we meander through an enchanted landscape experiencing an authentic remnant of Old Spain. Its unique architecture and geography is filled with character and history. Towns such as Truchas, Cordova and Ojo Sarco are home to fantastic galleries featuring woven rugs, woodcarvings, pottery, and other local arts. In Las Trampas, we find San Jose de Gracia de las Trampas which is an 18th century mission church exemplifying some of New Mexico's best-preserved Spanish Colonial architecture.



Our destination is Taos, a charming town steeped in Native American, Spanish and European cultures. The surrounding vistas are rugged and spectacular and the town itself is filled with galleries, shops, museums, and restaurants offering authentic and creative Southwest cuisine.

On the outskirts of the town, we will visit the San Francisco de Assisi Mission Church. Ansel Adams and Georgia O’Keeffe made this 18th century Taos landmark a modern icon through their artistic depictions. We’ll also visit Chimayo Trading del Norte Gallery which is in one of the oldest Taos settlements. Here we find stunning Navajo weavings, Native American art, and both historical and contemporary art.

Late in the afternoon, we meet up with Joe Barry of Taos Wools at his new venue for a special reception surrounded by his amazing yarns. Joe will share with us some of the history of his wool and the dye recipes that belonged to Rachel Brown.

Our accommodation for the night is at the charming La Dona Luz Inn, an historic B&B located close to the Taos Plaza. Parts of it date to as early as 1802 and are constructed with traditional adobe mud bricks with walls two feet thick and viga



ceilings. La Dona Luz, the Lady of Light, was well educated and known for her gracious hospitality hosting cultural soirees in this remote mountain town. This quaint B&B is an art gallery in and of itself and is filled with woven tapestries and artifacts. Dinner is on your own tonight to experience one of Taos’ many amazing restaurants. Overnight at La Dona Luz Inn. (B)





Monday, October 30

Taos Pueblo, a Museum, a Jaw-Dropping Royal Gorge and Tierra Wools

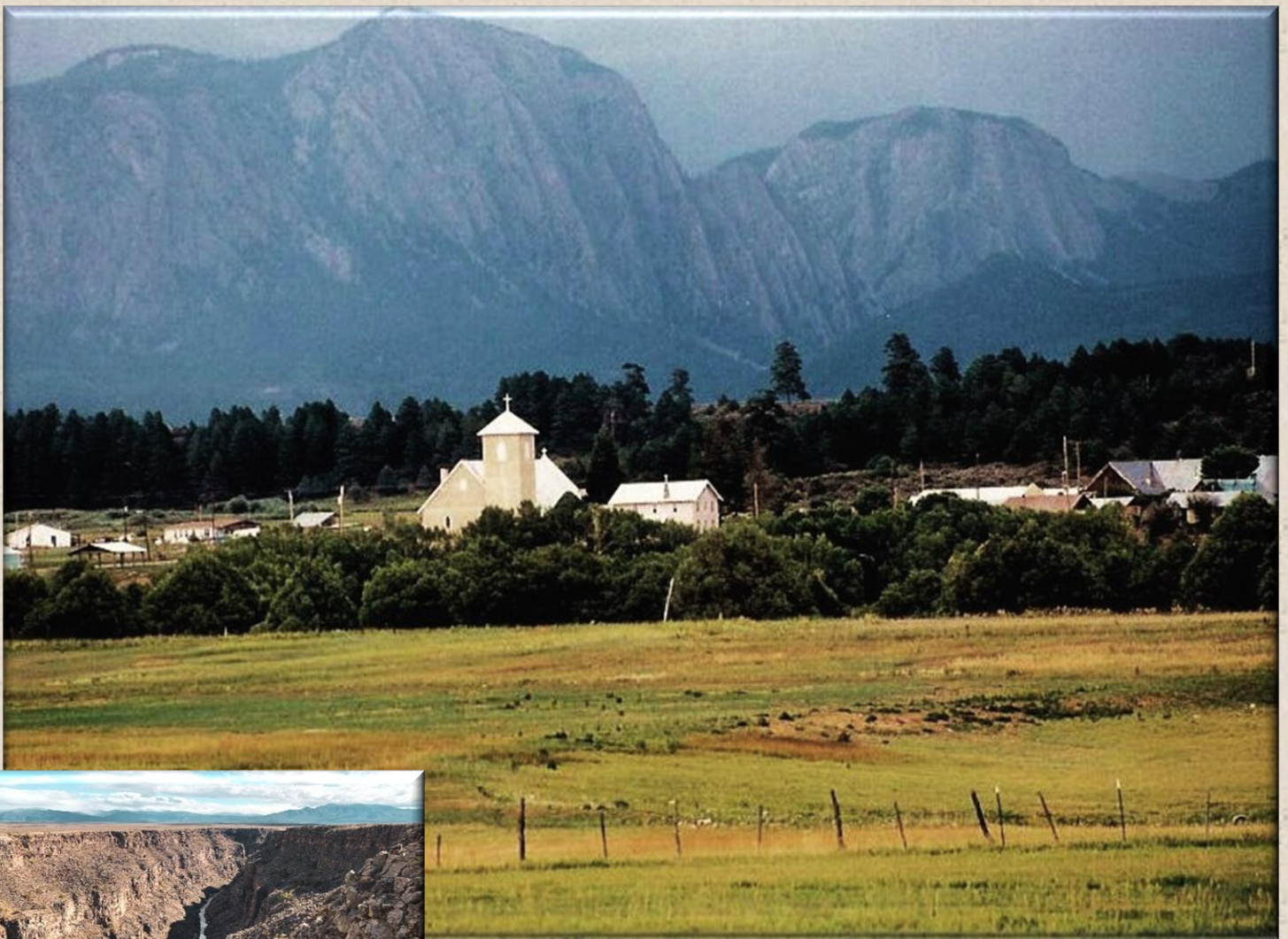
This morning we explore two of Taos' most enchanting sites. First, we take a journey back in time at Taos Pueblo, the oldest continually inhabited community in the nation built roughly 1,000 years ago. It is easy to imagine what the Spanish saw when they first laid eyes on the adobe buildings in 1540 as the pueblo looks much the same as it did then. There is no electricity or running water so only a small number of families live there full-time. However, the population swells to more than 1,900 tribal members living on Taos Pueblo lands when they gather for ceremonies. We'll take a tour with a tribal member to learn about the history, culture, and its people. We can explore the shops tucked into the adobes offering bread baked in traditional ovens, silver jewelry, art, and pottery.

We'll follow up our time at the Pueblo with a visit to the Millicent Rogers Museum, known as the "Jewel of the Southwest." For over 60 years, the museum has showcased one of the best collections of textiles, pottery, baskets, Native American Jewelry and Hispanic folk art in the New Mexico representing over a thousand years of Southwestern arts and cultures. We'll have an exclusive tour of the fourteen galleries with a docent.

From Taos, we'll set off for a gorgeous drive through the countryside en route to Tierra Wools in Chama. Just after leaving Taos, we'll see the Earthships of Taos set on a sprawling mesa. Since before the recycling days in 1971, architect Michael Reynolds included bioecological features into his designs creating self-sufficient dwellings created with recycled materials and energy conservation in mind. Think "Hobbit house meets Blade Runner."



Bottom right photo © EMKotyk



From here, it's on to the Royal Gorge Bridge, one of the highest in the US. It was named as the most beautiful bridge by the American Institute of Steel Construction. The bridge sits 650 feet above the Rio Grande Gorge, a vast canyon that stretches over 50 miles and ends just southeast of Taos. The views are mind boggling! We'll have a chance to stretch our legs, enjoy the vistas and walk a bit on the bridge for those that dare. Continuing on, we

drive over Brazos Summit which is one of the highest roads in New Mexico reaching an elevation of 10,528 feet. As you can imagine, the views are stupendous!

Dropping down into the Chama Valley we visit Tierra Wools where Cari trained as a weaver. Many weavers at Tierra Wools are descendants of Spanish settlers in the Rio Grande Valley. Their ancestors date back to the 16th century. Here we learn about the rich history of the Rio Grande weaving heritage that has survived for generations. Tierra Wools engages in the entire fiber process from raising the Churro sheep, spinning and dyeing the wool and weaving it into magnificent Rio Grande textiles. It is truly "hoof to loom." We'll have a special visit here and a chance to buy some of their amazing wool.

Our destination tonight is in the charming town of Abiquiu at the Abiquiu Inn, our high desert sanctuary located along the ancient Chama River where we will stay for two nights. Overnight at Abiquiu Inn.





Tuesday, October 31 Ghost Ranch Landscape Tour and Plaza Blanca

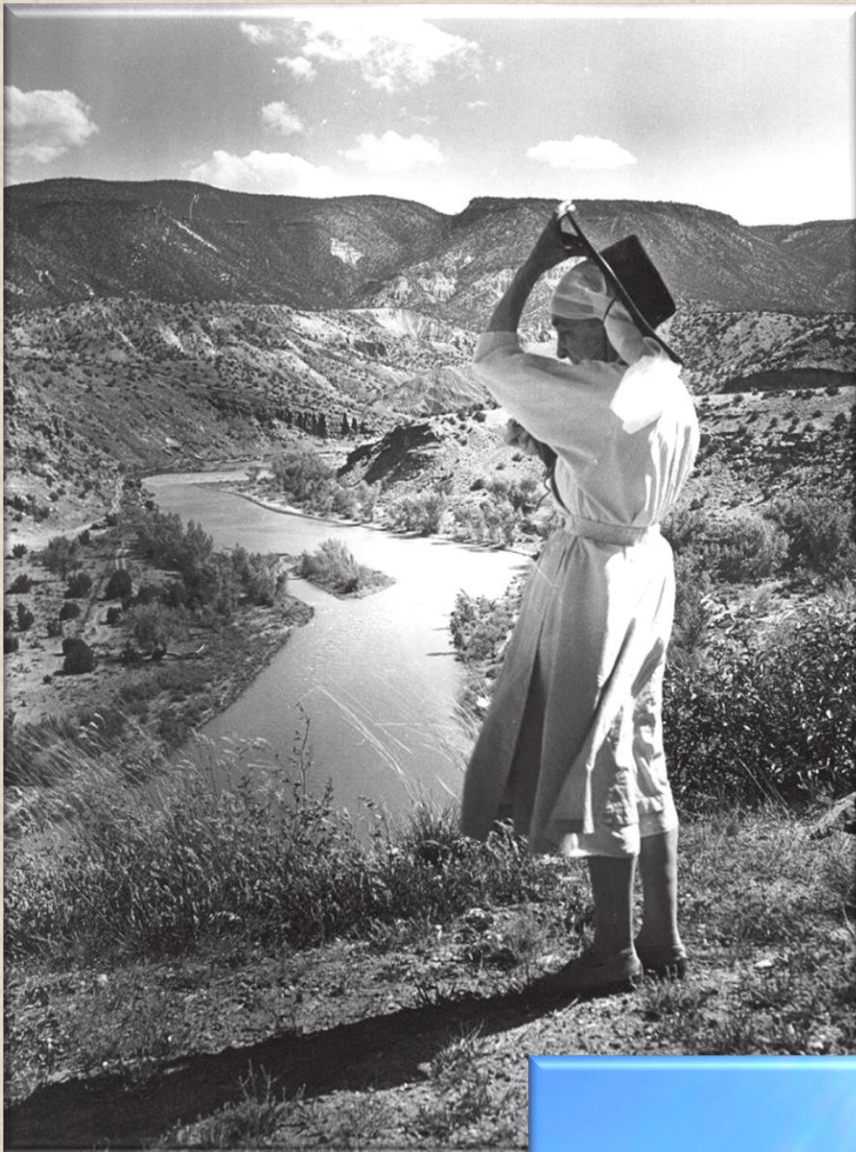
Today we set out to “chase more beauty” among the spectacular red rocks of Georgia O’Keeffe Country. The Chama River Corridor has been the home to Paleo Indian cultures from 10,000 years ago through ancestral Puebloan times and the Spanish settlers. In more recent times, it became home and inspiration to artists of many disciplines including Georgia O’Keeffe. Just up the road from our inn, we find Ghost Ranch, a soul-inspiring landscape of colorful cliffs in layer upon layer of orange, pink and yellow hues, and the red rocks that O’Keeffe painted while living at the ranch. Here we enjoy a one hour and 15 minute tour of the majestic landscape with an expert guide full of history and colorful stories. We have the opportunity to see parts of the ranch that otherwise one would not be able to visit. Here we’ll be introduced to reproductions of her paintings while standing close to the actual painting sites and have time to get out of the bus to spend time in the remote landscape.

Following our tour, we carry on to discover the nearby *Plaza Blanca* (the White Place), one of the most mysterious spots in New Mexico. These dazzling white sandstone cliffs were made famous by Georgia O’Keeffe and many motion pictures. On a short optional hike/walk, we explore this amazing landscape. In the late afternoon, we return to our restful haven at the Abiquiu Inn where we can soak in the warm hospitality, breathtaking views and magnificent landscape. Overnight at Abiquiu Inn.



Wednesday, November 1

Georgia O'Keeffe Home and Studio Tour and Return to Santa Fe



Today we have a real treat in store. In the morning, we'll enjoy a tour of Georgia O'Keeffe's home and studio. With an expert guide, we explore her historic Abiquiu home and gardens which were a great source of inspiration to O'Keeffe. She dedicated a great deal of time, energy, and love into making this 5,000 square foot Spanish-Colonial-era compound into her special haven. On our special visit, we have the opportunity to experience first-hand her vision of a place that was in total ruin when she bought the property in 1945. O'Keeffe once said of the famous Black Door on the property, "That wall with a door in it was something I had to have. It took me ten years to get it – three more years to fix the house so I could live in it and after that the wall with a door was painted many times."

We'll continue to "chase beauty" all the way back to Santa Fe immersing ourselves in more of the magic of Northern New Mexico that makes this region so enchanting. We will arrive in the late afternoon. In the evening, there will be a Welcome Reception and Orientation to kick off our Tapestry Weaving in Santa Fe. Overnight at Inn of the Governors. (Reception)



Chasing Beauty Extension Land Costs Include:

- 4 Nights' Accommodation based on double occupancy; single accommodations available with supplement
- 4 Days private sightseeing tour with professional guide and exclusive cultural visits
- All entry fees
- All applicable service charges and taxes

Costs Exclude:

- Air transportation
- Airport transfers as indicated
- Any item not specifically included in your program including all snacks, extra personal beverages & bottled water, etc. other than during designated meals, alcoholic beverages
- Tips for your guide, ground staff, drivers, hotel porters and other service staff
- Additional Insurance of any kind

Cost:

\$1,095 USD Per Person Based on Double Occupancy
Single Supplement \$450 for those prefer their own room

Please call us with any questions or to reserve your spot

800.369.3033 (from the US only) ~ 970.728.6743



PO Box 2154, Telluride, CO 81435

loomdance@aol.com ~ www.loomdancer.com

800-369-3033 (from the US only) ~ 970-728-6743 ~ Fax 970-728-7081