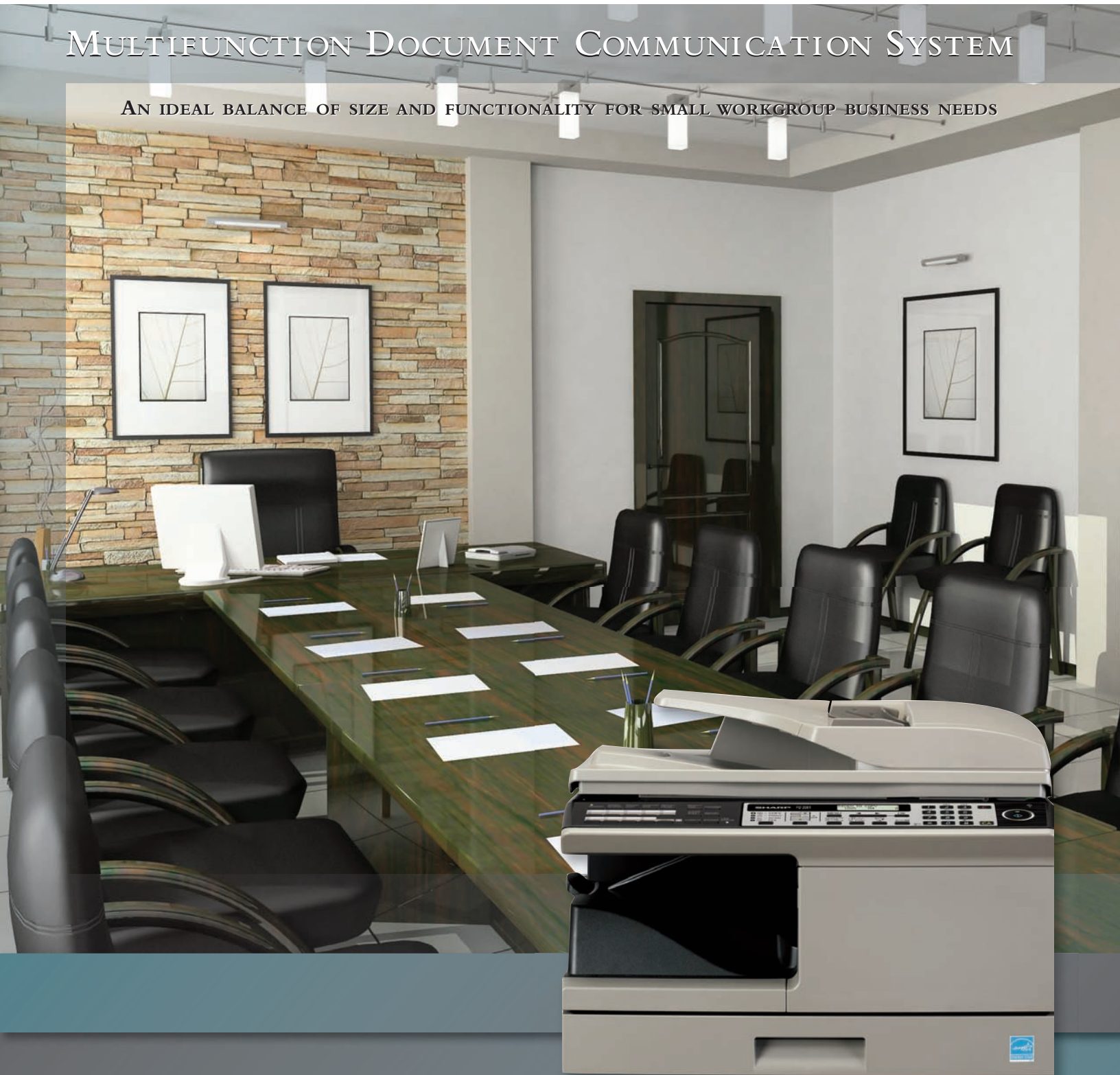


SHARP®

MULTIFUNCTION DOCUMENT COMMUNICATION SYSTEM

AN IDEAL BALANCE OF SIZE AND FUNCTIONALITY FOR SMALL WORKGROUP BUSINESS NEEDS



FO-2081



AN IDEAL BALANCE OF SIZE AND FUNCTIONALITY FOR SMALL WORKGROUP BUSINESS NEEDS

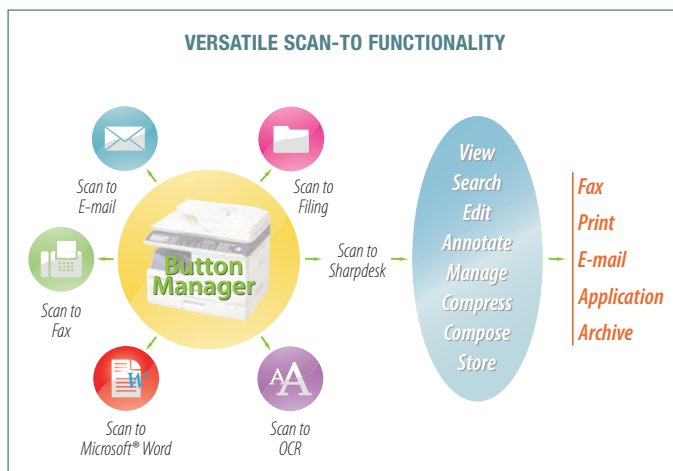
To keep your business workflow moving in the right direction, Sharp offers the FO-2081 Multifunction Document Communication System. The versatile FO-2081 combines high speed faxing functionality with the conveniences of high-quality digital copying, network printing, and full color scanning. Its feature-rich copying and printing capabilities are simple and easy-to-use, making them readily accessible to anyone in your workgroup. And with Sharp's long history of award-winning reliability, the FO-2081 is engineered to help keep up with today's busy workplace environments. Designed with the small workgroup's everyday business needs in mind, the Sharp FO-2081 Multifunction Document Communication System offers an ideal balance of size and functionality.

FAST & EFFICIENT BUSINESS FAXING

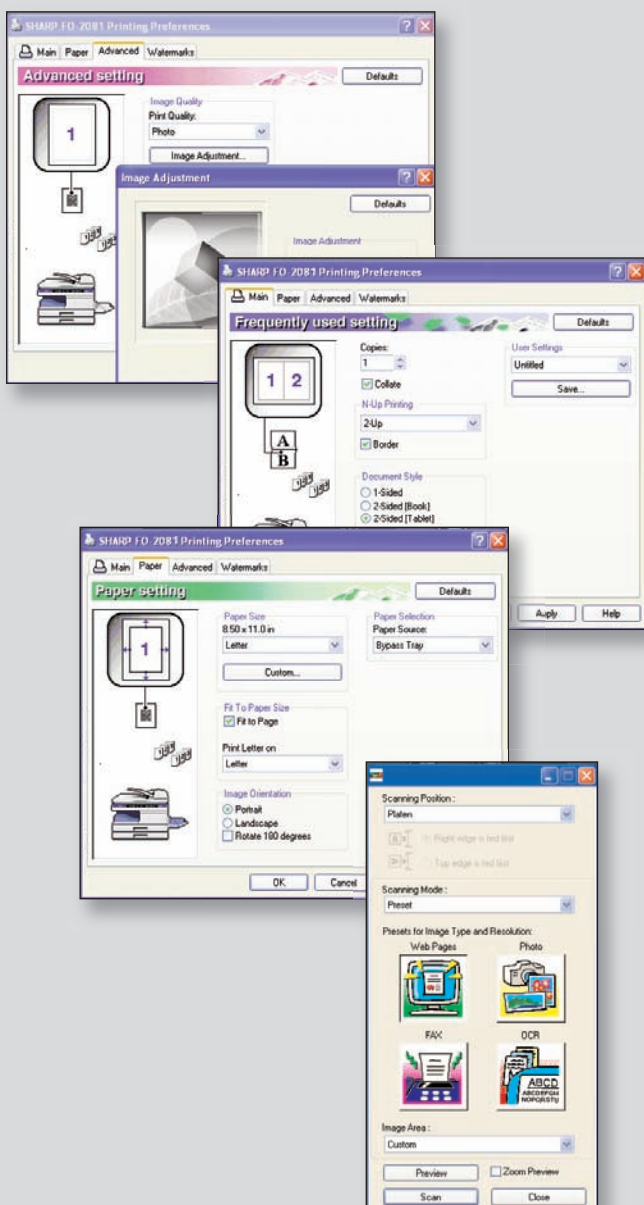
The FO-2081 makes everyday business document communication quick and easy. Two-sided documents up to 50 sheets long are easily scanned using the Reversing Single Pass Feeder, while built-in Super G3 faxing capabilities help ensure that faxes are sent quickly and with no time wasted. Even sending documents to multiple destinations is simple and straightforward with advanced features like Group Dialing, Chain Dialing, and Broadcasting. Equipped with the intelligence to help receive large files without interruption, this device has enough standard memory for up to 50 jobs, or over 100 pages, while the Auto Tray Switching feature will automatically change which paper tray it is using if one becomes empty while printing*. And with the ability to adjust resolution settings for standard text, small text, or photos and images, output control is entirely in your hands.

DIGITAL DOCUMENT IMAGING

The Sharp FO-2081 delivers much more than just business workgroup faxing capabilities. With Sharpdesk®, Sharp's innovative document management software, all of your business documents can be integrated into one place for easy organizing, editing, sharing, and archiving. And scanning your documents is no problem with Button Manager, Sharp's built-in utility designed to help you select file types (such as PDF, TIFF, and Bitmap), and manage commonly-used destinations for sent files. It gives you the ability to send scanned documents directly to any folder on your computer's hard drive, making storage and filing a simple and speedy one-step process. You can even scan to OCR (Optical Character Recognition), which converts scanned text into a format that you can edit right from your desktop.



* Some features may require optional equipment.



EASY-TO-USE SHARP UTILITIES

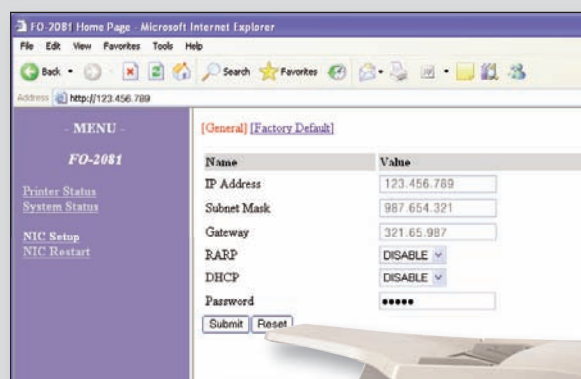
In addition to the versatile document management capabilities found in Sharpdesk and Button Manager software, you can also take advantage of Sharp's other integrated software utilities. The Embedded Web Page is Sharp's online device management tool, easily accessible from any computer connected to your local area network. Sharp's Printer Status Window is a handy utility that allows you to monitor the status of your documents as they are printing, and can even notify you if an error occurred during the printing process. Another convenient tool is the Online Manual, which lets you easily navigate through all of the technical information on the functions of the machine, or simply search the manual for details on a specific feature. Combined with any of Sharp's award-winning workgroup document systems, these convenient and easy-to-use software applications and utilities give you the control you need to help improve office productivity and efficiency better than ever before.

CONVENIENT, RELIABLE COPYING & HIGH QUALITY PRINTING

The Sharp FO-2081 is not only a highly capable workgroup business fax – this MFP-based model is also a multitasking, multifunction printer, with the ability to handle your everyday copying and printing needs. This versatile performer delivers high resolution output, along with added print features such as N-Up Printing, Fit to Page, Watermarks and adjustable image quality to help you improve or enhance the appearance of your documents. It can also help you increase office productivity with its instant warm up times, and Continuous Copying capability, letting you scan once and print up to 99 sheets. And no longer will you have to go far to retrieve professional-looking documents from a centrally-located, shared printer. Small enough to be placed closer to the user, the Sharp FO-2081 has been designed with the ability to create crisp, clear business documents with no hassle and in less time.

ADVANCED PAPER HANDLING

The Sharp FO-2081 helps keep workflow moving seamlessly with paper handling capabilities not found in your typical fax machine. It offers a standard 250-sheet paper tray that can accommodate different paper sizes or types, along with a 50-sheet bypass tray for an overall capacity of 300 sheets. Add the optional 250-sheet paper tray for a maximum paper capacity of 550 sheets. It also delivers features such as 2-sided printing, copying and scanning, as well as E-Sort and Offset Stacking, making tasks such as collating, separating, and sorting absolutely effortless. This model is even flexible enough to handle special paper types such as heavy paper, labels, transparencies, and envelopes. The FO-2081 packs impressive performance and convenient paper handling capabilities into a package small enough to fit on a file cabinet, countertop, or even your desktop!



FO-2081 SPECIFICATIONS

MAIN SPECIFICATIONS

Model	FO-2081
Type	Multifunctional Document Communication System
Standard Functions	Fax/Copy/Print/PC Scan
Copy/Print System	Laser, dry electrostatic transfer system
Fusing System	Heat rollers
Developer System	Magnetic brush development
Light Source	Cold cathode fluorescent lamp (CCD: 3 components; R, G, and B)
Power Supply	100-120V, 50/60 Hz, 8A
Power Consumption	Max. 1.0 kW or less
Weight	Approx. 42.1 lbs. (19.1 kg) ¹
Dimensions	20 3/8" (W) x 18 1/8" (D) x 14 3/4" (H) 518 mm (W) x 460 mm (D) x 376 mm (H)
Space Requirements (with trays extended)	21 5/8" (W) x 18 1/8" (D) 802 mm (W) x 460 mm (D)
Operating Conditions	Temperature: 50°F to 86°F (10°C to 30°C) Humidity: 20% to 85%
Supported Operating Systems	CD-ROM: Windows® 2000/XP/Server 2003/Vista/Server 2008/7; Mac OS-X 10.4.11/10.5.5 – 10.5.8/10.6 – 10.6.8 Via Download: Mac OS-X 10.2/10.3
Utilities	Web-based management, integrated software installer, Printer Status Window, Online manual

FAXING SPECIFICATIONS

Applicable Telephone Line	Public Switched Telephone Network (PSTN)
Compression Method	MH, MR, MMR, JBIG
Transmission Modes	Super G3, G3
Scanning Method	CCD flatbed scanning
Scanning Resolution	8 x 3.85 lines/mm (Normal) 8 x 7.7 lines/mm (Small) 8 x 15.4 lines/mm (Fine)
Transmission Speed	Super G3 (up to 33.6 kbps) ²
Transmission Time	Approx. 2 seconds (Super G3 mode/33.6 kbps, JBIG) Approx. 6 seconds (G3 ECM mode/14.4 kbps, JBIG)
Paper Size	8-1/2" x 11" (Letter), 8-1/2" x 14" (Legal), or A4
Recording Width	8-1/2" Max. (8-1/2" x 14" printing)
Transmittable Original Size	When using the RSPF: Maximum: One-sided original: 8-1/2" x 19.7" Two-sided original: 8-1/2" x 14" Minimum: 8-1/2" x 5-1/2" When using the document glass: Maximum: 8-1/2" x 14"
Scanning Width	8-1/2" Maximum
Halftone Transmission	256 levels
Contrast (Exposure) Adjustment	Light, Medium, Dark
Extension Telephone Connection	Yes
Auto Dialing	100 Speed Dial numbers; combined total of 18 One-Touch Dial and Group keys; automatic redialing
Group Dials/Broadcasting	100 destinations/18 groups
Timer Transmission	Yes
Automatic Document Feeding	Yes (50 pages)
Memory Capacity	2 MB
Job Memory	Up to 50
Error Correction Mode (ECM)	Yes
Duplex Sending	Yes
Duplex Receiving	Yes
Import/Export of Address Book	Yes

COPYING SPECIFICATIONS

Photoconductive Type	OPC drum
Originals	Sheets, bound documents
Original Feed System	50-sheet auto reversing single pass feeder (RSPF)/document glass
RSPF Feeding	Approx. 13 opm (Letter size, standard mode)
Paper Feed System	Paper Tray: 250-sheet capacity Manual Bypass Tray: 50-sheet capacity
Paper Type	Paper Cassettes: 15-21 lb. standard or recycled bond paper Bypass Tray: Up to 50 sheets 15-34 lb. standard or recycled bond paper; postcards/envelopes (#10 Monarch)/OHP film /labels one sheet feed
Original Size	Max. 8-1/2" x 14"
Copy Size	Max. 8-1/2" x 14" Min. 8-1/2" x 5-1/2" Image Loss: Max. 11/64" (4 mm) (leading and trailing edges) Max. 3/16" (4.5 mm) (along other edges in total)
Copy Speed	20 ppm (8-1/2" x 11", one-sided copying at 100% copy ratio)
Continuous Copy	Max. 99 copies; subtractive counter
First-Copy Time	8.0 seconds ³
Warm-Up Time	Approx. 0 sec. ³
Zoom Range	Document Glass: Variable: 25% to 400% in 1% increments Fixed Zoom Mode: 25%, 50%, 64%, 78%, 100%, 129%, 200%, 400% RSPF: Variable: 50% to 200% in 1% increments Fixed Zoom Mode: 50%, 64%, 78%, 100%, 129%, 200%
Exposure System	Document Glass: Moving optical source, slit exposure (stationary platen) with automatic exposure function RSPF: Moving original
Exposure Modes	AUTO/TEXT/PHOTO
Auto Exposure	600 x 300 dpi (5 manual steps (TEXT/PHOTO))
Resolution	Scan: 600 x 300 dpi; Output: 600 x 600 dpi (AUTO/TEXT mode) Scan: 600 x 600 dpi; Output: 600 x 600 dpi (PHOTO mode)
Gradation	256 tones (8 bits)
Output Tray Capacity	200 sheets (face down)
Offset Stacking	Standard paper shifter (offset stacks sets by 1 inch in output tray)
Copy Features	Duplex copying, offset stacking, electronic sorting, ID card copy, 2-in-1 copy, zoom, margin shift, variable memory adjustment, and auto shut off

NETWORK PRINTING SPECIFICATIONS

Print Speed	Up to 20 ppm
Resolution	600 x 600 dpi
Port Types	Ethernet; USB 2.0
Interface	10BASE-T/100BASE-TX Network Interface USB 2.0 (Full-Speed/Hi-Speed compatible interface)
Emulation	PCL®6
Network Protocols	TCP/IP (IPv4)
Printing Protocols	LPR, USB 2.0 [Hi Speed]
Memory	128 MB
Print Size	8.5" x 14" to 3.87" x 5.83"
Print Features	Duplex printing, offset print, status window, N-up printing, fit to page, watermark, rotate 180 degrees
Minimum System	Ethernet interface or USB port and CD-ROM drive;
Windows Requirements	2000, XP, Vista, 7, Server 2003, Server 2008
Printing Software	Print driver, Printer Status Window
Read Once Print Many	Yes

PC SCANNING SPECIFICATIONS

Type	Flatbed full color/monochrome PC scanning system
Scanning Method	Document glass/RSPF
Resolution	Basic: 600 dpi x 600 dpi Setting Range: 50 dpi – 9600 dpi (maximum interpolated)
Original Type	Sheets/books up to 8-1/2" x 14"
Effective Scanning Area	8.5" (216 mm) (Lengthwise) x 14" (356 mm) (Width)
Scanning Speed	2.88 msec/line
Input Data	AD 16 bit (12 bit real use)
Bit Depth	24 bit color
Output Data	R.G.B. 1 or 8 bits
Scanning Colors	Black and white 2 value, Grayscale, Full color
Protocol	TWAIN, WIA (Windows XP/Vista/7), STI
Interface	USB 2.0 (Full-Speed/Hi-Speed compatible interface)
Drop Out Color	Yes
Void Area	None
Scanner Software	Sharpdesk® desktop document management software, with Button Manager for scan destination control and image-to-text OCR (Optical Character Recognition)
PC Scan Destinations	5 preset PC scan destinations can be configured using Button Manager
File Formats	Push Scan: JPEG/TIFF/PDF Pull Scan: JPEG/TIFF/PDF
Scanning Features	Scan to USB, Scan to Sharpdesk, Scan to E-mail, Scan to Fax, Scan to OCR, Scan to Microsoft® Word (or other application), Scan to File

OPTIONAL EQUIPMENT & SUPPLIES

MX-CS10	250-sheet paper tray
MX-201ABD	Deluxe Cabinet (with door and locking casters)
FO-56ND	Toner ⁴ (Yield: approx. 6,000 letter size pages, 5% image area)
FO-55DR	Drum Cartridge ⁴ (Yield approx 18,000 pages)
MX-USX1	Sharpdesk 1 License Kit
MX-USX5	Sharpdesk 5 License Kit
MX-US10	Sharpdesk 10 License Kit
MX-US50	Sharpdesk 50 License Kit
MX-USAO	Sharpdesk 100 License Kit

¹ Not including toner and drum cartridges.

² On ITU-T Test Chart # 1 standard resolution.

Actual transmission time will vary according to line conditions.

³ May vary depending on product configuration, machine settings and operating and/or environmental conditions.

⁴ Starter toner and full-life drum cartridge included with FO-2081.



SHARP

© 2011 Sharp Electronics Corporation. All rights reserved.

SHARP ELECTRONICS CORPORATION
Sharp Plaza, Mahwah, NJ 07495-1163
1-800-BE-SHARP • www.sharppusa.com

Printed in the U.S.A.

Design and specifications subject to change without notice. Sharp, My Sharp, Sharpdesk and all related trademarks are trademarks or registered trademarks of Sharp Corporation and/or its affiliated companies. Microsoft Word, Windows and Windows Vista are trademarks or registered trademarks of Microsoft Corporation. All other trademarks are the property of their respective owners.

11/11 • FAD-3243