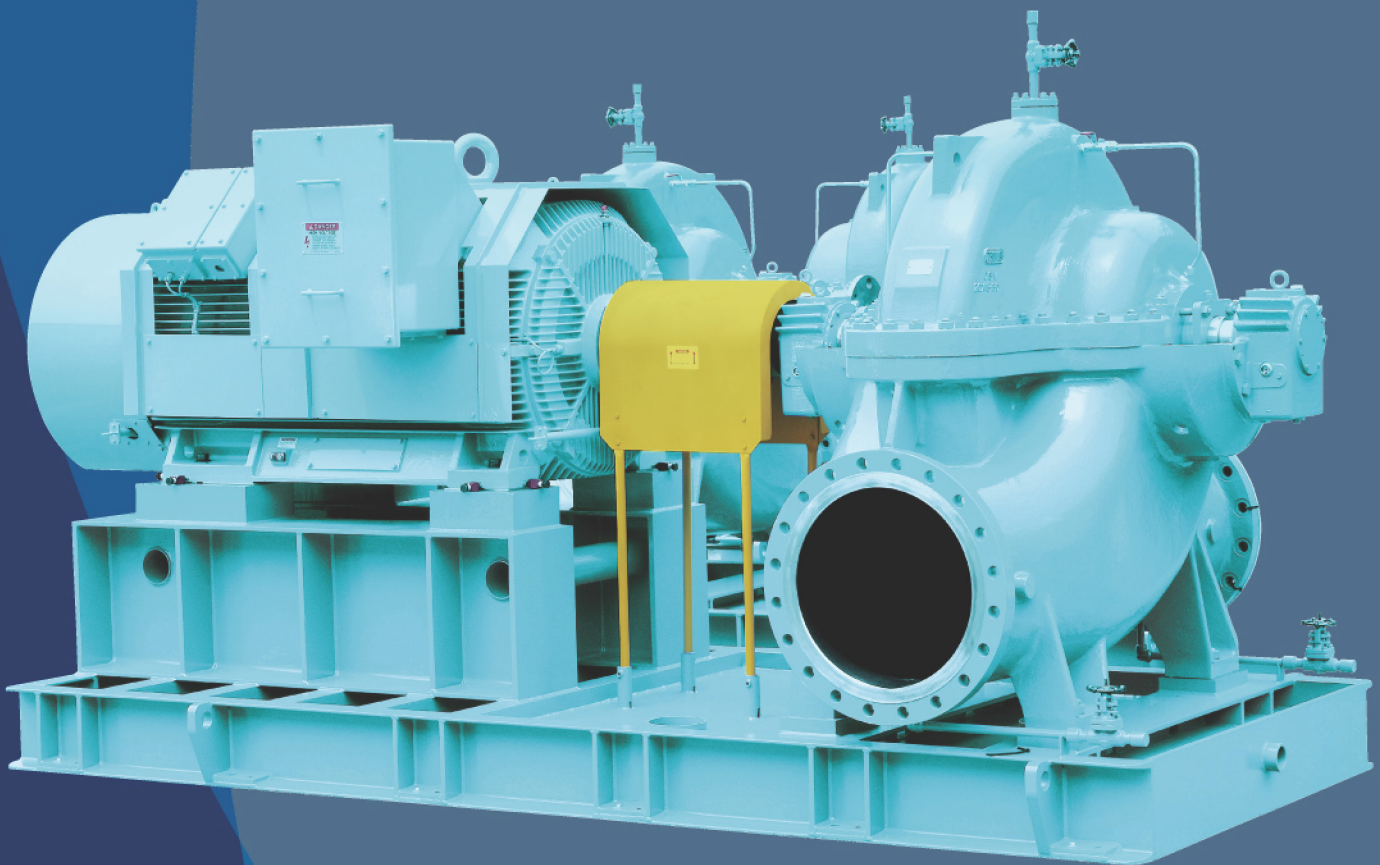


API 610, 11th Ed. Double Suction Volute Pump (BB1)

# DSV

## Series

API 610, 11th Ed. Double Suction Volute Pump (BB1)



**TRUFLO**  
QUALITY • VALUE • SERVICE

# DSV SERIES

## API 610, 11th Ed. Double Suction Pump (BB1)

- Max.Capacity :  
13000m<sup>3</sup>/h (57000GPM)
- Max.Head : 210m (690ft)
- Temperature : 180°C (6100°F)
- Allowed Pressure :  
24kg/cm<sup>2</sup> (340psi)
- Power : 2500kw (3400HP)
- Material : DCI, WCB, CF8M, CD4M,  
CN7M, HASTELLOY B&C
- Horizontal split casing for easy maintenance
- Replaceable wear rings to protect impeller  
and casing
- Wide range of mechanical seal arrangements
- Fully order-production by customer's requirements

TRUFLO DSV is an axially split, single stage pump designed to API 610(BB1), 11<sup>th</sup> Edition.

Double suction impeller provides hydraulic axial balance and designed for maximum hydraulic efficiency

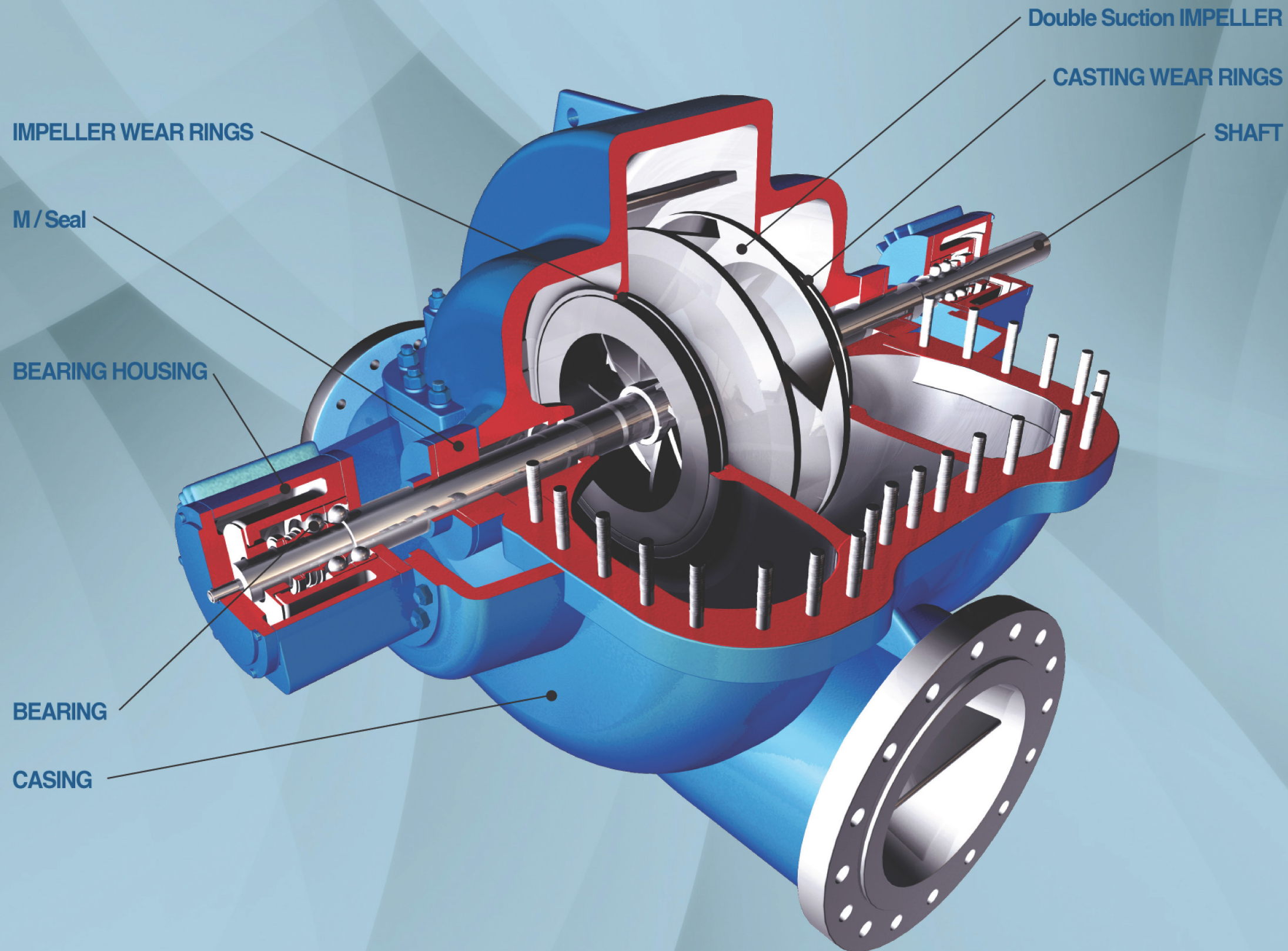
Double volute design minimizes hydraulic radial loads, even at minimum flow. Stiff shaft design ensures trouble-free performance by operating under the first critical speed.

Extensive hydraulic coverage

### APPLICATION

- \_ Hydrocarbon and water transfer
- \_ Petroleum refining, production and distribution
- \_ Petrochemical and heavy-duty chemical processing
- \_ Hydrocarbon and water pipeline
- \_ Power generation
- \_ Gas scrubbing
- \_ Firefighting
- \_ Cooling water





### Double Volute, Axially Split Casing Design

Minimizing hydraulic radial forces  
Reducing shaft deflection  
Increasing the life of bearings, seals and wear rings

### Suction and Discharge Nozzles

Nozzles are designed API 610 specifications

### Centerline Mounted

Engineered Foot mount for service temperatures

### Confined Gasket Design

eliminates corrosion of bolts and nuts

### Raised Face Flanges

- ANSI 150 lbs
- ANSI 300 lbs

### Casing and Impeller Wear Rings

API610 requirements

### Double Suction Impeller

Providing hydraulic axial balance

### API 682 Seal Chambers

To meet required safety and environmental requirements

### Baseplate Designs

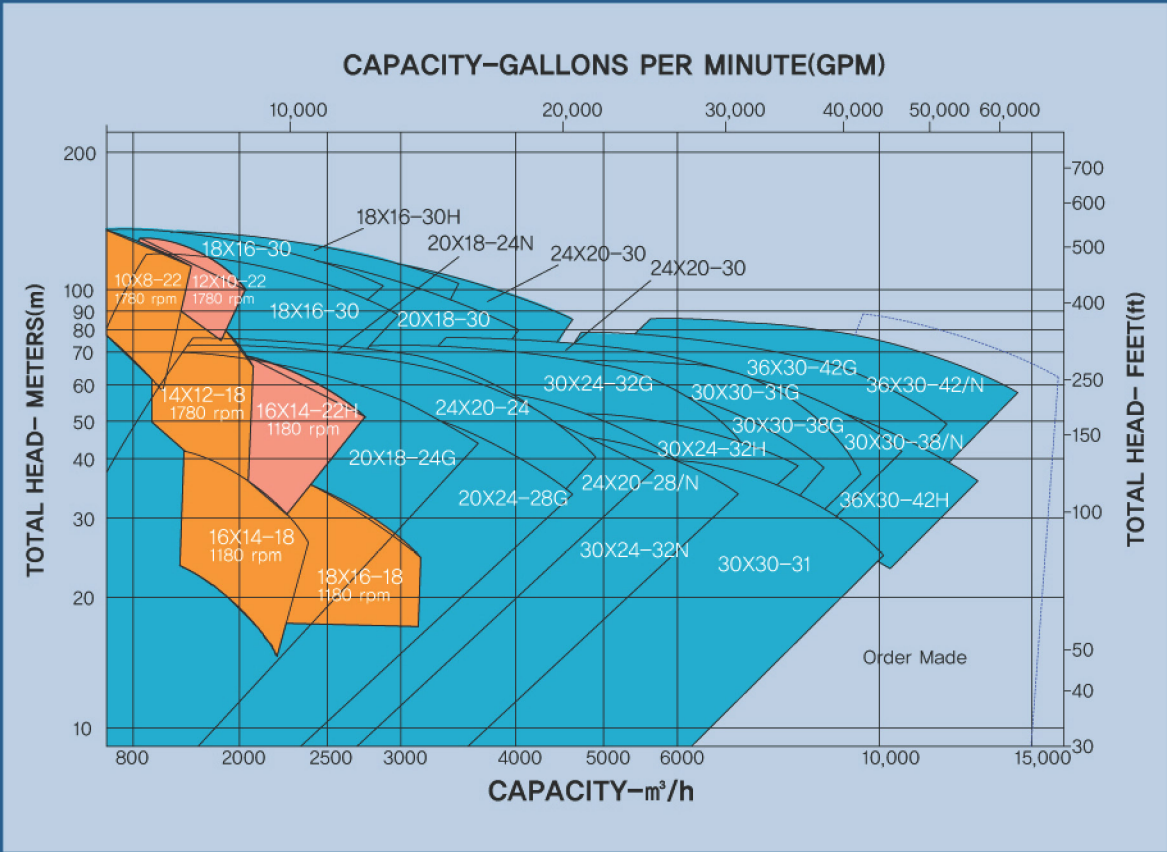
Provided to customer requirements

**API 610, 11th Ed. Double Suction Volute Pump (BB1)**

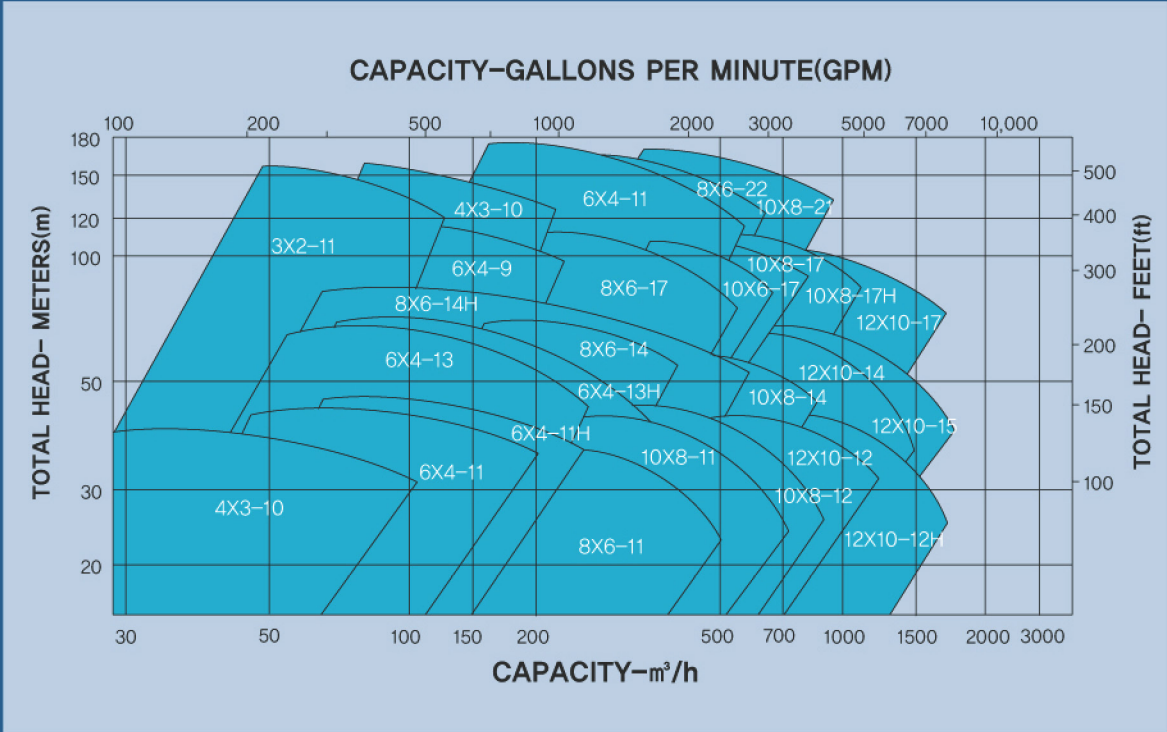


# PUMP SELECTION GUIDE

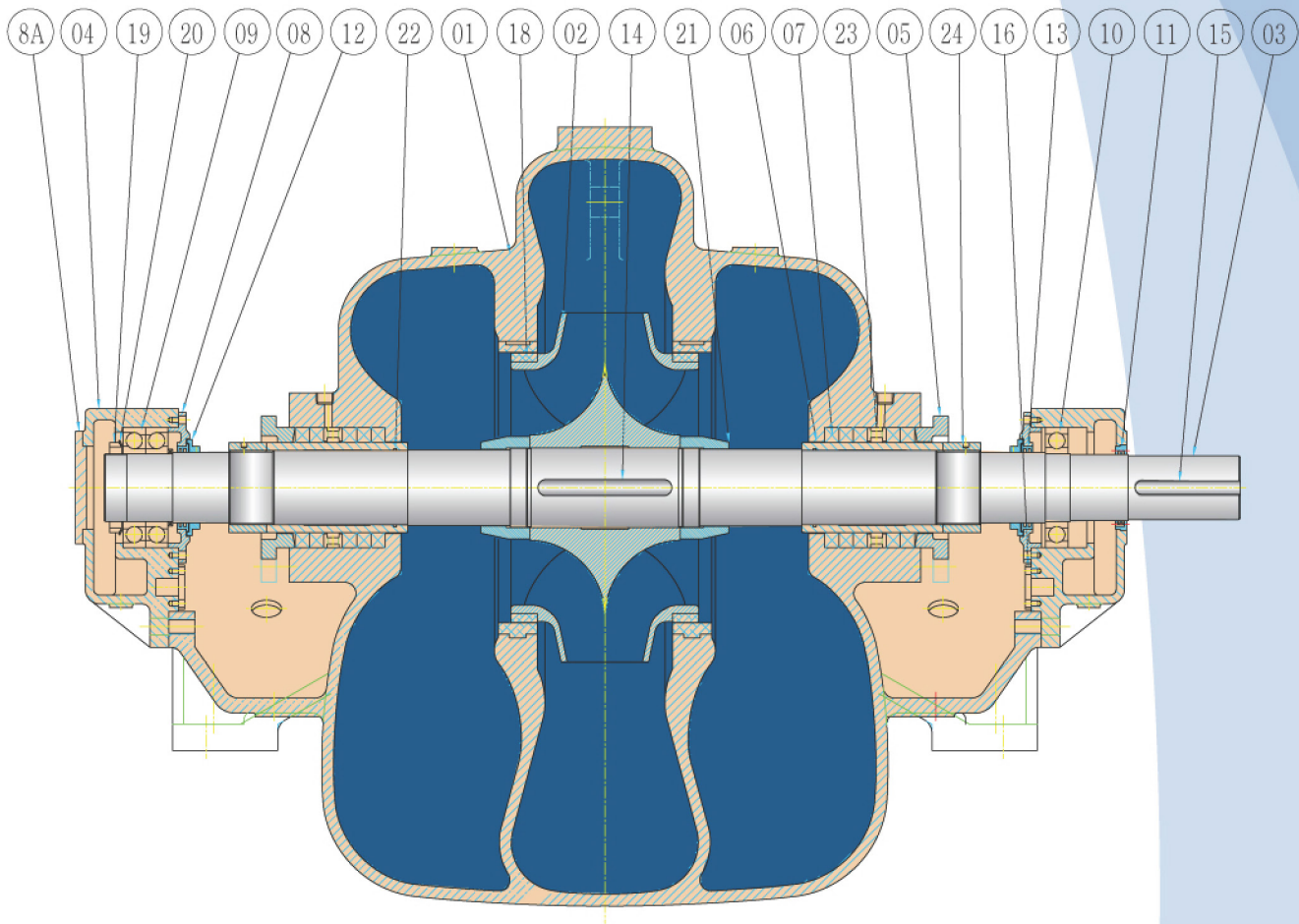
3500/2850 RPM(60HZ)



1750/1450 RPM(50HZ)



# SECTIONAL



NO	NAME OF PART
1	CASING
2	IMPELLER
3	SHAFT
4	BRG.HOUSING
5	GLAND
6	SLEEVE SPACE
7	PACKING
8	BRG.COVER
8A	BRG.COVER (OUT BOARD)
9	BEARING

NO	NAME OF PART
10	BEARING
11	LABYRINTH(COUPLING)
12	LABYRINTH (IN)
13	LABYRINTH (OUT)
14	IMPELLER KEY
15	COUPLING KEY
16	COOLING COVER
17	GASKET(CASING&CASING)
18	IMPELLER WEARING
19	LOCK NUT

NO	NAME OF PART
20	LOCK WASHER
21	IMPELLER NUT
22	SLEEVE GASKET (O-RING)
23	LANTERN RING
24	SLEEVE NUT
B1	CASING & CASING
B2	CASING & BRG.HOUSING
B3	BRG.HOUSING & COVER
B4	BRG.HOUSING & COOLING COVER

## Truflo Pumps, Inc.

7105 Cessna Drive  
Greensboro, NC 27409

Ph: (336) 664-9225  
Fax: (336) 664-1353

E-Mail: Sales@TRUFLO.com  
Website: www.TRUFLO.com