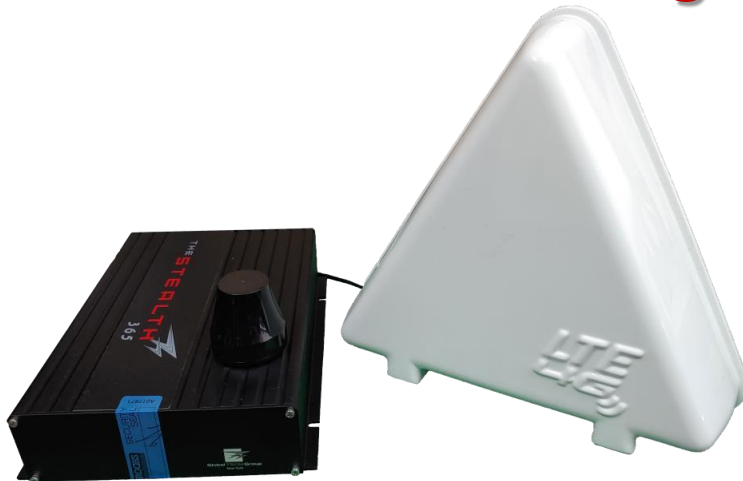


## Smartphone, Cell phone Detector with Real Time Remote Monitoring Capability



The Stealth Prison detects illegal cell phone use in prison (jail) in real time 24/7 and notifies you through the PC of the central control center or text messages to supervisor. Because the location of the detected room can be known by ID, prison guards can find cell phones by intensive search in that area. In other words, it is a product that enables practical monitoring even when the guards are not on patrol.

### DETECTS

- Cell phones and modems (CDMA450, GSM 900, GSM 1800, 3G)
  - Wireless data transmitters (4G, WLAN, BLUETOOTH 2.4 and 5GHz)
- The main purpose of the system is the detection of unauthorized transmission of data in the area of surveillance.

### These areas include

- Prisons and correctional facilities
  - Exam rooms and testing facilities
  - Areas with limited use of cell phones, radios, etc.
- The location finding mode for localizing the source of transmission is available when using special search receiver.

### Specifications

- RF
    - Frequency Range: 790-2700 MHz
    - Sensitivity: -90 ~ -75dBm
    - Interfaces: USB, ETHERNET, WLAN
    - Coverage: 10m<sup>2</sup> ~ 20m<sup>2</sup>
- The Stealth Prison can be remotely operated via network for group monitoring up to 1000 units.