

We are dedicated to providing you convenient and compassionate care. If you have any questions about your PET/CT scan or need additional information about any of our services, please contact us:



Your Appointment

Date:

Time:

PET/CT Scan

A Patient's Guide

What is PET/CT?

PET/CT is a powerful tool that provides valuable information to help your physician diagnose health concerns, determine the extent of disease, prescribe treatment and monitor therapy progress. PET/CT actually combines two imaging techniques: a positron emission tomography (PET) scan that shows your body's physiologic changes, and a computed tomography (CT) scan that shows the structure of your anatomy where the changes are taking place. Together, these two imaging techniques provide highly sophisticated information to your physicians about the presence or spread of disease and accurately identify its location.

Preparation

A PET/CT scan is fast, straightforward and painless. There is some preparation for your PET/CT scan that must be followed. Specific instructions will be provided to you prior to the exam, but in general you are not allowed to eat or drink anything for at least 4-6 hours prior to the scan and should avoid strenuous exercise for at least 24 hours prior to your scan, unless you are otherwise instructed. Below is an overview of what to expect when you arrive at the imaging center for your scan:

Registration

Once you have checked in, one of our technologists will escort you back to the imaging area to collect your medical history.

Blood Sample

A technologist may take a small blood sample to check your glucose levels.

Tracer Injection

You will receive an intravenous injection of a radioactive tracer, which will leave your body naturally through your bladder.

Relax

As you rest for approximately one hour, the tracer will circulate throughout your body.

Scan

You will lie on a bed for your scan, which will take less than 30 minutes. You will feel the bed move slowly through the PET/CT scanner opening, first taking a CT scan, followed by a PET scan. Our technologist will instruct and keep you informed during the entire examination. Since movement of the body while the pictures are being taken may require the scan to be repeated, you should remain as still as possible and breathe normally, unless told otherwise. You may be required to keep your arms above your head during the exam.

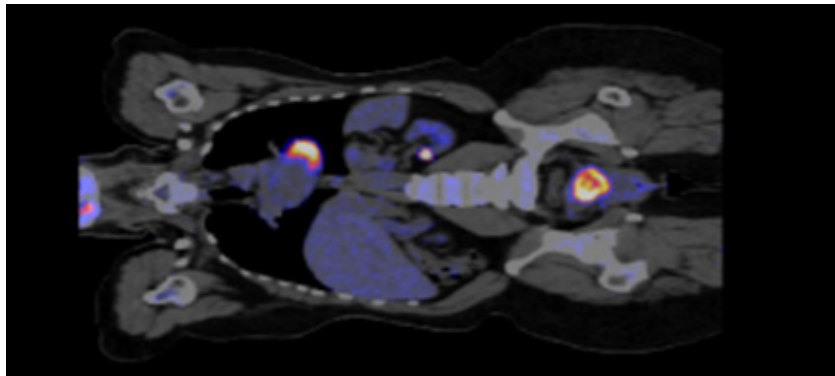


Image courtesy of University of Tennessee Medical Center, Knoxville, TN USA

Following the Scan

Once the scan is complete, you can relax while the technologist processes the images. After departing the imaging center, you may resume normal activities immediately, unless you have received other instructions from your physician. Over the next few hours, the small amount of radioactive tracer administered to you will break down and naturally leave your body. To help clear this tracer more rapidly, drink as much fluid as possible for the remainder of the day, and empty your bladder frequently, unless otherwise instructed by your physician.

A specialist will interpret the images produced by your PET/CT scan. The final results will be reported to your physician, usually within 48 hours.