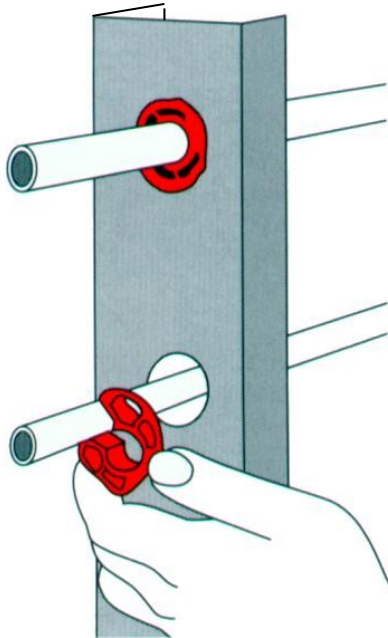


# pipe-tytes<sup>®</sup>

INC.



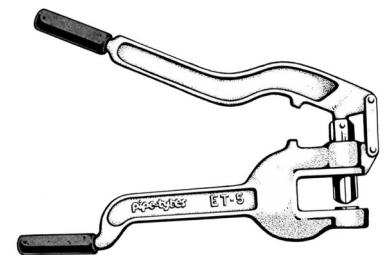
## Insulators for Metal Studs

**Insulates copper or polypipe tubing from sharp metal edges.**

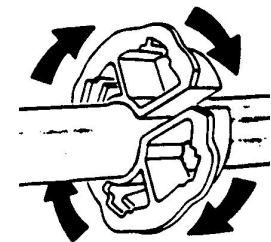
- Eliminates pipe rattle & electrolysis.
- Pipe-Tytes completely isolates the pipe from the metal stud.
- Fits 1/2" 3/4" & 1" copper tubing.
- Off-set hole makes for better pipe alignment.
- Made of tough, durable polyethylene.
- Withstands temps of 140° F.
- For use on all metal studs 18 gauge or lighter.

Installs in seconds for a neat professional job:

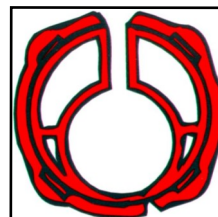
1. Punch hole in metal stud with the ET-5 Stud Punch.
2. Place PipeTyte grommet over the pipe and push into the hole. Will not fall out or break. Secures the pipe to the stud either before or after soldering. This feature enables the plumber to fit many pipes together and maintain accurate pipe position before soldering.
3. The patented off-center hole allows you to rotate the PipeTyte grommet in the hole to level or add pitch to the pipe. This enables the pipe to pass by stacks, or rotate back away from drywall screws or nails.



ET-5 Metal Stud Punch



Mfg. by Pipe-Tytes, Inc.  
9050 16th Street Vero Beach Florida 32966  
Toll Free Phone: 800-325-8739  
Toll Free Fax: 866-576-6200  
Web: [www.pipetytes.com](http://www.pipetytes.com)  
Email: [salesdept@pipetytes.com](mailto:salesdept@pipetytes.com)



Tube Size	Part #
1/2" copper	500P
3/4" copper	750P
1" copper	1000P