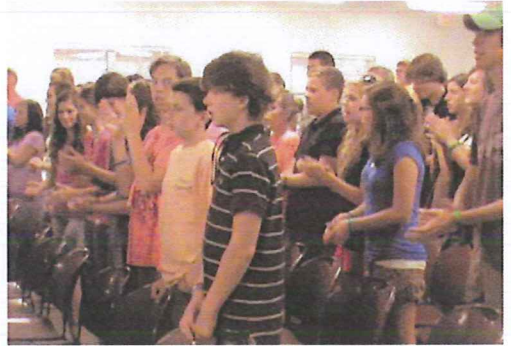


FRIENDSHIP CAMP MASTER PLAN



Friendship Camp has Vital Role in Local Missions

- In 2012 over 60 individuals were trained as Camp Missionaries—many sharing their faith during one of the Summer Camps.
- Dozens of children, youth and adults accept Christ as Savior each year.
- Many other decisions are made each year including those who are making a commitment to special service in Christ's Kingdom.
- Youth, college students and adults are getting their first experience with hands on missions.
- For several churches, Friendship Camp is a key part of their strategy to win the lost and many who get saved are baptized in one of our churches.
- A number of young adults who served as youth at camp continue a life of mission involvement.

Why Build and Improve?

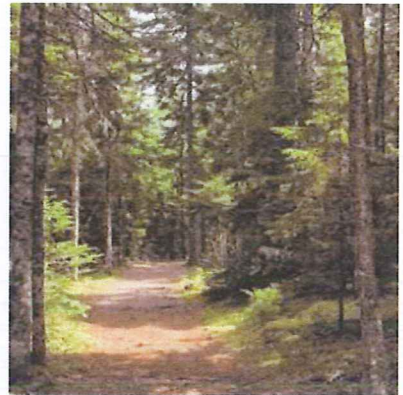
OUR VISION:

We see a day when--

- Friendship Camp will be a more powerful tool to reduce the growing lostness in our communities and help fulfill the ACTS 1:8 mandate.
- Friendship Camp is not only a place where the love of missions begins and people are trained and sent out, but also a place where missionaries from around the world will come to live with us and be a resource for inspiring new generations.
- Our facilities will no longer limit multiple groups from using the camp at the same time, thereby increasing usage of our God-given resources.
- We can better minister to married couples and families, as well as an increasing number of Summer Missionaries by providing new housing options.
- We can provide better facilities for church groups to hold training and retreats: Deacons, marriage enrichment, prayer, church/ministry planning, etc.
- Heat and rain no longer make for miserable days without an indoor option.

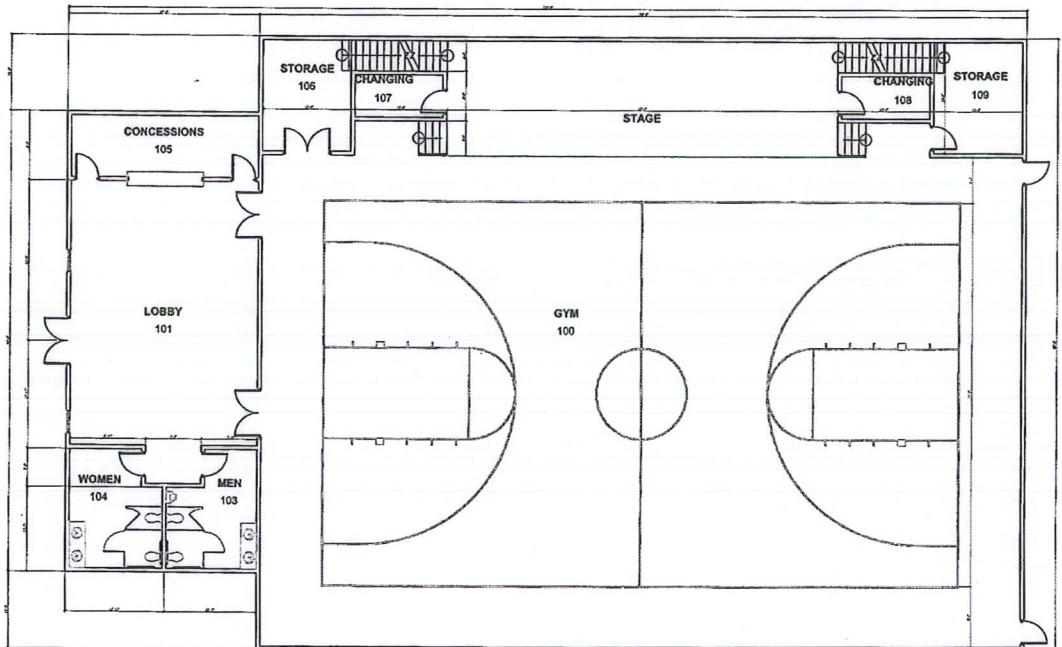
New Features

- New Entrance off Route 30 (where flag poles are currently located).
- An improved road system with parking lots accessing the existing Dining Hall and the new Multipurpose Building.
- A 1 mile walking trail.
- A new Mini Golf Course and the addition of a 9 hole Disc Course.
- A new Recreation Field, an Adventure Course and a Primitive Camping Area.



Multipurpose Building

- Much needed indoor recreation area.
- Large meeting space to accommodate over 300 participants.
- Large stage area for concerts, plays and speaking engagements.
- Multiuse floor space easily adapts from recreation to meeting space.
- Conference rooms on Second floor left and right above stage.
- Designed for easy expansion on long or narrow wall to meet future needs.
- Showers in Restrooms allow for youth lock-ins and other needs.
- Concession area can eliminate trips to dining hall.



New Cabin—Quad

- Four 4 Bedroom 4 bath cabins with central meeting area.
- Kitchen makes each unit self-contained which aids in multiuse of camp.
- Great for retreats and planning meetings.
- Adds needed Summer Missionary housing.
- Serves as a temporary home for furloughing IMB Missionaries.
- Proposed sleeping capacity of 16.

Four Quad Units can be situated around a central courtyard that will have an outdoor cooking station and seating for larger gatherings.



Making a Tax Deductible Contribution

We are committed to developing Friendship Camp into a first-rate facility that will bring great value to the churches that make up Friendship Baptist Association and to the Kingdom of God as a whole for many years to come. We have also made a commitment to only build as the resources are available and therefore will not incur debt throughout this building process. God has given us a tremendous vision and it will take a great deal of help and support from many sources to make the vision a reality. Please prayerfully consider a generous gift toward the development of the Master Plan for Friendship Camp. Below you will find several ideas on how you can make a donation that we believe will literally touch thousands of lives in the generations to come and cause our Lord to make heaven bigger because many more souls will be there having had their lives transformed at Friendship Camp.

Ways To Make a Donation:

1. **Cash Contribution:** One time gift or three-year pledge.
2. **Give a Gift "In Honor" or "In Memory":** One time gift or three-year pledge.
3. **Gift of Land or other Non-cash Assets:** There are tax benefits to making a gift of appreciated stock or land.
4. **Dedicate a Crop, Cattle, or other Produce:** For example, dedicate a field or acreage for 1 to 3 years and give the profit amount.
5. **Give Building Materials/Site Work/skilled labor/equipment:** Excavating/dirt moving, lumber, electrical supplies and work, plumbing, HVAC, etc.
6. **Develop a fundraising event to benefit this ministry project:** For example, collect scrap metal and donate the proceeds, 1 to 3 years. Sunday School classes and other church groups could work together to hold one or multiple events.
7. **Another Idea:** We would love to hear your idea. Please give us a call or describe on the enclosed Donation Commitment form and we will call you.

All contributors of \$1,000 or more will be recognized on the Appreciation Wall in the Lobby of the new Multipurpose Building. Contributors of more than \$5,000 will be recognized as Friendship Camp Champions. See the next page for Giving Levels and Naming Opportunities. For your convenience, a Donation Commitment form has been enclosed along with a return envelope. If you did not receive this form or have questions about how to give, please contact the Association Office at 229-937-2350 and we will be glad to help you in any way.

GIFT LEVEL OPPORTUNITIES

Friendship Camp Champion \$5,000 or more
Friendship Camp Supporter \$1,000 to \$4,999
All gifts are greatly appreciated!

NAMING OPPORTUNITIES

⇒ Gym/Worship Center.....\$125,000
⇒ 2 Conference Rooms (each).....\$15,000
⇒ Lobby & Concession.....\$20,000
⇒ 4 Quad Cabins (each).....\$65,000
⇒ New Entrance & Road.....\$50,000
⇒ New Recreation Field.....\$25,000
⇒ Walking Trail.....\$25,000

**Donors will be prominently displayed on the
Appreciation Wall in the Lobby of the Multi Purpose Building**

For more information on ways to make a gift, please contact

Friendship Baptist Association
504 E. Oglethorpe St.
Ellaville, GA 31806
229-937-2350
friendshipdom@windstream.net

or

Paul Mott, Camp Development Committee Chairman
229-942-6974 • pfmott@bellsouth.net

Periodic updates on the progress of contributions toward the Master Plan will be given in the
Word & Way and on our website • www.friendshipbaptistassociation.org