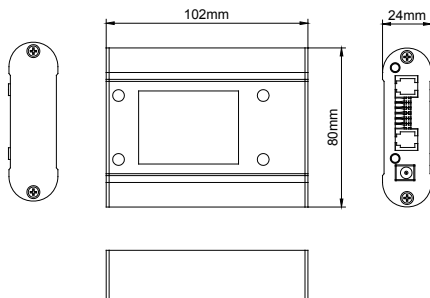


A.I. CONTROLLER RE-ZTKZQ-01

Detailed Description

Performance	
InputVolts	5V DC
Select ballast type	600W/1000W
Set output level	50-115%
Outputs	2
Temperature sensors	2
Number of ballasts per output	50
Total number of ballasts	100
External Contactor Modules	2 optional

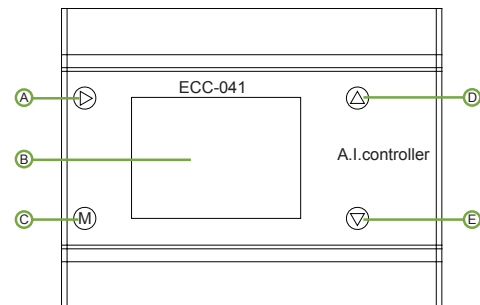
Physical		
Case Length	102mm	4.02"
Case Width	80mm	3.15"
Height	24mm	0.95"
Weight	170g	0.35lb



Protections

- No need for a switchboard
- Easy and safe installation (low voltage device)
- Protected against shortcuts
- Double temperature safety feature
- For 50 ballasts
- Show output as W or %
- Auto-dim at set temp
- Auto shutdown at set temp
- Sunrise/sunset period
- Alarm contacts NO/NC

CONTROLS		
	Key	Function
A	Enter	Go to menu/confirm
B	Disply	Display status and controller menu
C	Menu	Switching menu
D	Up	Navigate up in menu/confirm
E	Down	Navigate down in menu/confirm



CONNECTIONS

A	3.5mm jack aux temperature sensor
B	RJ9 aux port for controlling up to 50 ballasts
C	Cage clamp connector ECM1
D	Cage clamp connector ECM2
E	Cage clamp alarm Normally open
F	RJ9 main port for controlling up to 50 ballasts
G	3.5mm jack main trmperature sensor
H	5V DC input

