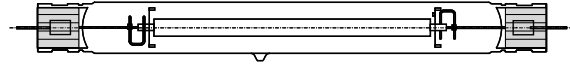


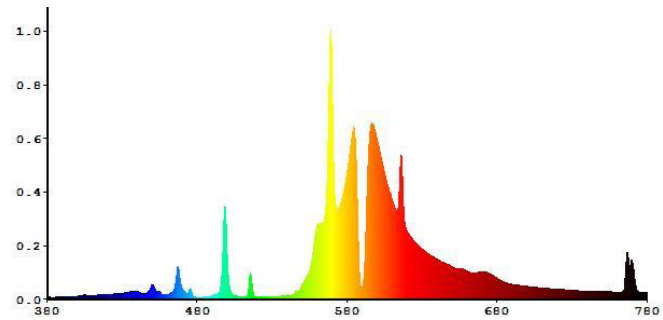
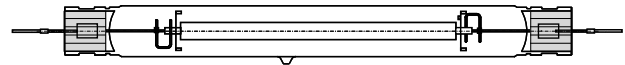
HPS1150W/HOR/HO/T32.5/250V
CP.HPS.2115000

| PERFORMANCE DATA | | |
|---|-----------|---------|
| Initial lumens at rated voltage after 100 hours operation | 160000 | Lm |
| Initial lumens at rated watts after 100 hours operation | 150000 | Lm |
| Rated average life | 10000 | H |
| Warm up time | 7 | Min |
| Correlated color temperature | 2100 | K |
| CIE chromaticity | 0.52,0.42 | x,y |
| Color rendering index | 33 | |
| Operating Position | H | |
| PAR value a (380-780nm) | 2100 | μ mol/s |

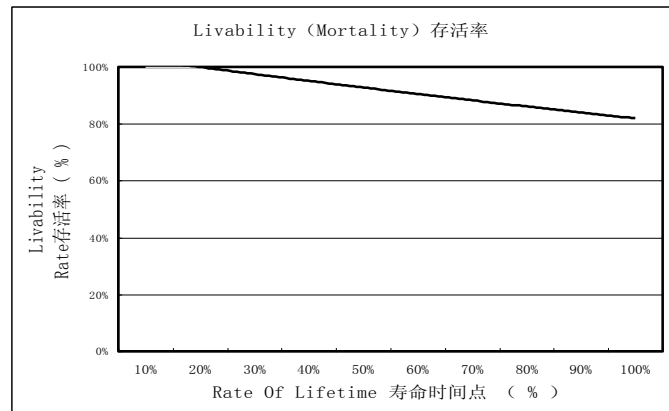
Without lead wire:



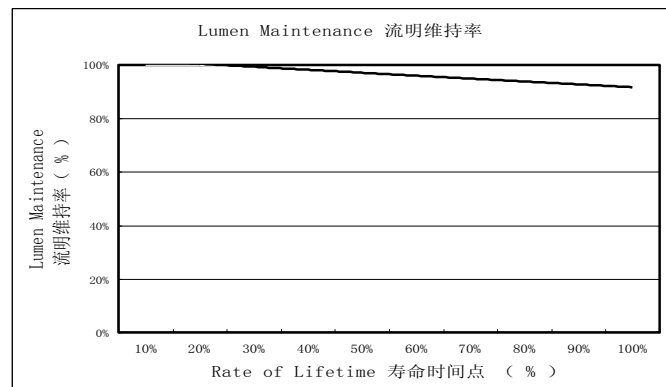
With lead wire:



| ELECTRICAL CHARACTERISTICS | | |
|----------------------------|------|---|
| Nominal lamp wattage | 1150 | W |
| Nominal lamp voltage | 250 | V |
| Nominal lamp current | 5.0 | A |
| Ballast | / | |



| PHYSICAL DESCRIPTION | | |
|---------------------------------|--------------|---------|
| MOL with lead wire | 390 | mm |
| MOL without lead wire | 350 | mm |
| Total quartz tube length | 325 | mm |
| Arc length | 157 | mm |
| Max Bulb diameter | 33.5 | mm |
| Base to bulb eccentricity (max) | 3 | degrees |
| Maximum bulb temperature | 400 | °C |
| Bulb designation | T32.5 | |
| Bulb material | Quartz Glass | |
| Arc tube material | PCA | |
| Bulb finish | Clear | |



制表:

审核:

核准:

日期:

日期:

日期: