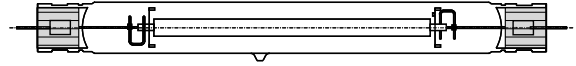


HPS1000W/HOR/HO/T32.5/250V

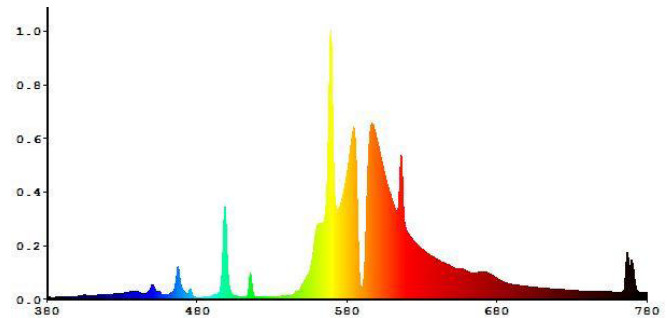
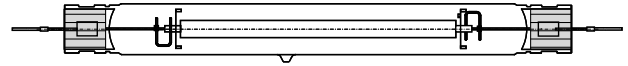
CP.HPS.2102022

PERFORMANCE DATA		
Initial lumens at rated voltage after 100 hours operation	150000	Lm
Initial lumens at rated watts after 100 hours operation	140000	Lm
Rated average life	10000	H
Warm up time	7	Min
Correlated color temperature	2100	K
CIE chromaticity	0.52,0.42	x,y
Color rendering index	33	
Operating Position	H	
PAR value (380-780nm)	2000	μ mol/s

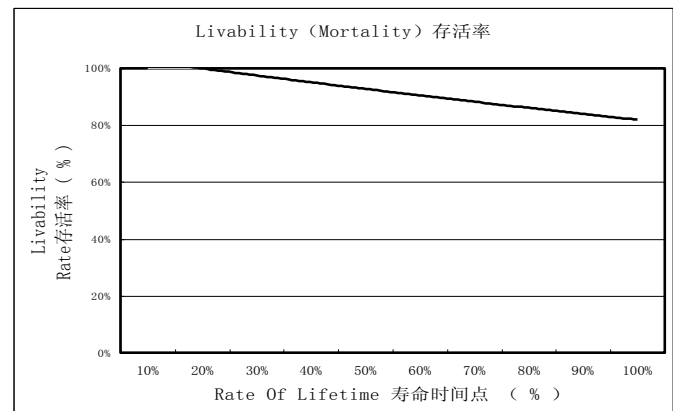
Without lead wire:



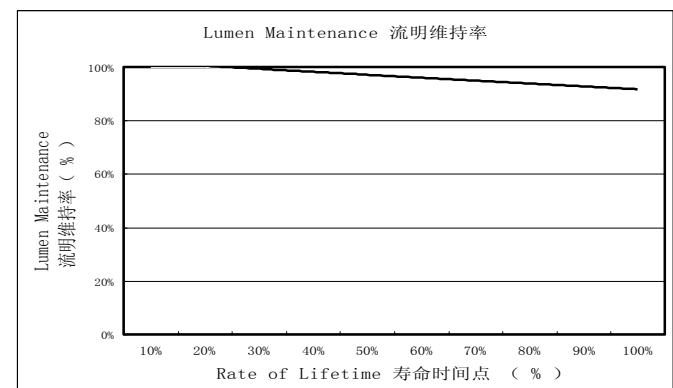
With lead wire:



ELECTRICAL CHARACTERISTICS		
Nominal lamp wattage	1000	W
Nominal lamp voltage	250	V
Nominal lamp current	5.0	A
Ballast	/	



PHYSICAL DESCRIPTION		
MOL with lead wire	390	mm
MOL without lead wire	350	mm
Total quartz tube length	325	mm
Arc length	157	mm
Max Bulb diameter	33.5	mm
Base to bulb eccentricity (max)	3	degrees
Maximum bulb temperature	400	°C
Bulb designation	T32.5	
Bulb material	Quartz Glass	
Arc tube material	PCA	
Bulb finish	Clear	



制表:

审核:

核准:

日期:

日期:

日期: